



August 2009

Elmore Senior Center

MONDAY

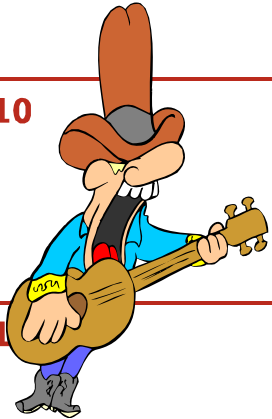
TUESDAY

WEDNESDAY

THURSDAY

FRIDAY

3

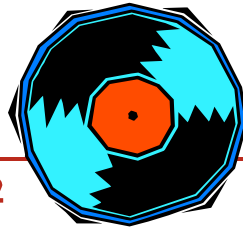


4

60+ Clinic

Jim Newman
and his Banjo

5



6

*American
Bandstand*

7



10

11

Brian Coil
Riverview
Health Care
Campus

12

13

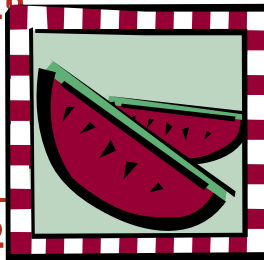
Angela McKinstry
Americare Home Health
BP's
Celebrating
Aviation Week
w/ Tom Price

17

18

Nutrition Update
Dar Mensing
OSU EXTENSION
OFFICE

19



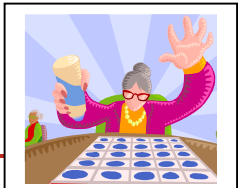
20

10:30

Site Council Mtg.
*"I Dream of
Jeannie" Trivia*

21

24



25

BP and Sugars
Bingo

26

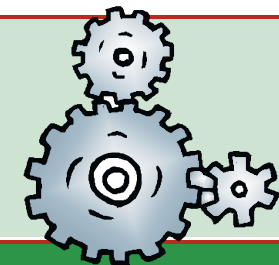
27

Creative Ice
Cream Day

28



31



elmoreseniors@co.ottawa.oh.us

Elmore Senior Center
19225 W. Witty Road
Elmore, OH 43416
419-862-3874



Site Manager
Tammy L. Reichert

Lunch is served at
12:00 Noon –
Tuesday & Thursday

Suggested Donation
is \$2.50 – 60 years of
age and older.
\$5.00 for those
under the age of 60.

Call by 10am the day
prior to your
reservation.