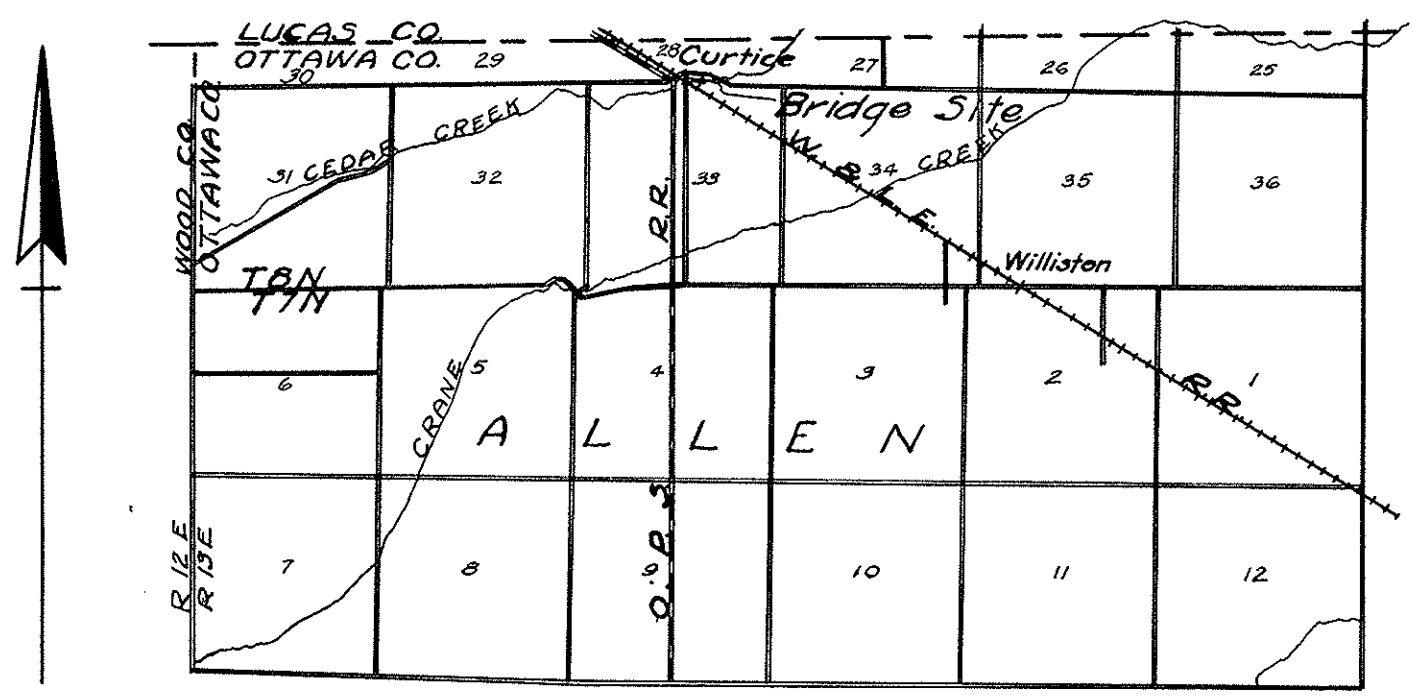


CONCRETE BEAM BRIDGE OVER CEDAR CREEK

WILDACRE RD. #72
SEC. 28

ALLEN TWP.
T8N R13E

OTTAWA CO.
JUNE 1935



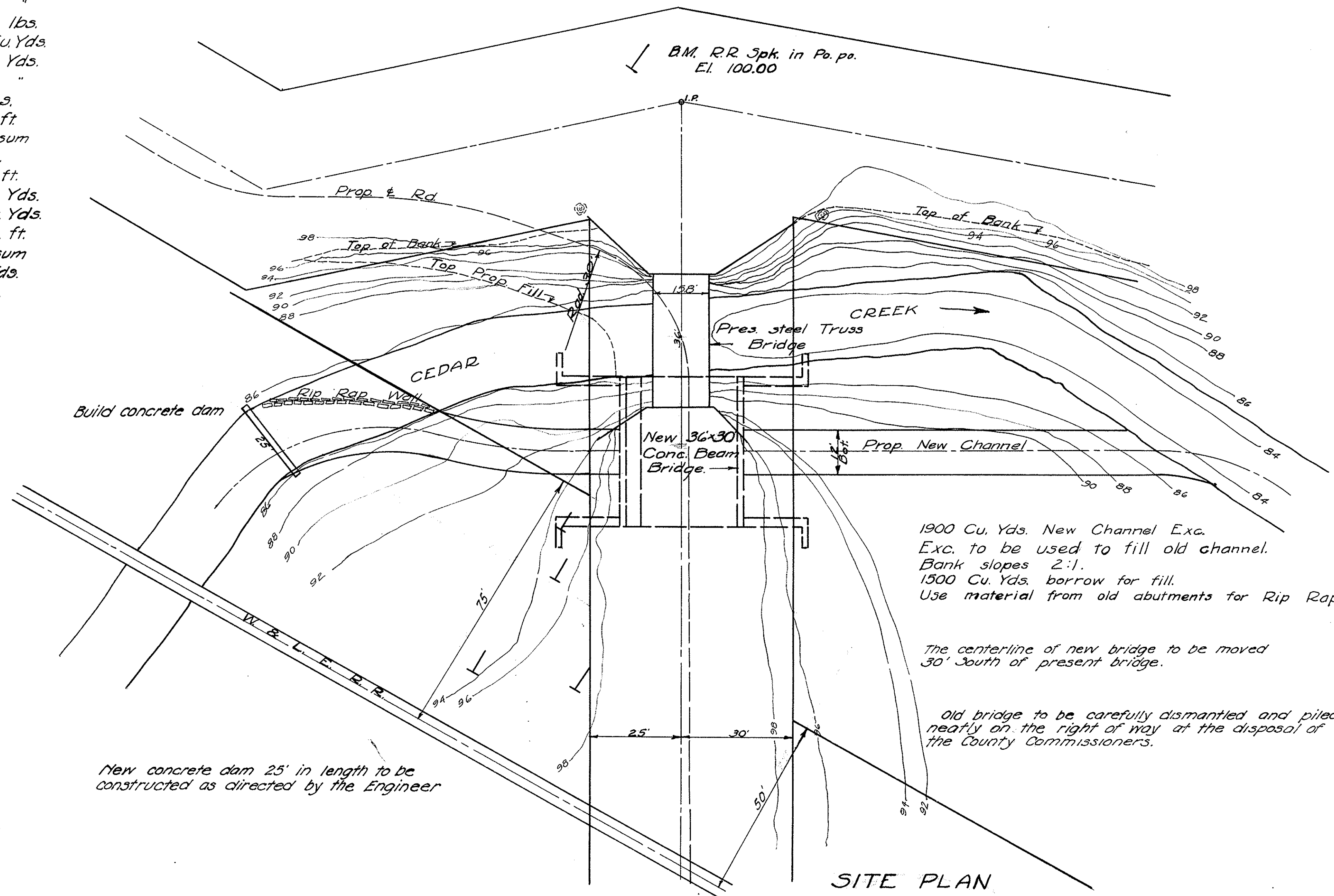
LOCATION PLAN

Approved: Reginald C. Fetterman
Date: 6-27-35 Ottawa Co. Surveyor.

Approved: A. C. Buel
Fred Arnold
Edu. H. Tanski
Date: 11-25-35 Ottawa Co. Commissioners.

SUMMARY OF QUANTITIES

Removal of old Bridge	Lump sum
New Channel Exc.	1900 Cu. Yds.
Borrow	1500 " "
Footing Exc. (Wet)	350 " "
Footing Exc. (Dry)	240 " "
Cofferdams, Sheet piling, & Pumping	Lump sum
Concrete Footings (1'-6 1/2")	164 Cu. Yds.
Concrete Walls (1'-6 1/2")	182 " "
Reinforcing Steel	32,765 lbs.
Concrete Superstructure (1'-5 1/2")	66.2 Cu. Yds.
Wearing surface course	113 Sq. Yds.
Sidewalk	16 " "
1/2" cast leaded bronze plates	184 lbs.
1/2" Prem. bit. exp. jt. filler	14 Sq. ft.
Expansion joint	Lump sum
Cast Iron Scuppers	4 Pcs.
Railing	79 Lin. ft.
8" W.B. Mac. Base (2 Courses)	175 Sq. Yds.
T-60 Cold laid asphalt top 1 1/2" Thick	200 Sq. Yds.
Rip rap wall (12' high)	45 Lin. ft.
Lights, signs, & barricades	Lump sum
Type "A" Waterproofing	7.5 Sq. Yds.
Concrete Dam	Lump sum



SITE PLAN

Fill shall be formed of earth, free from vegetation, or other approved materials of suitable character placed in successive level layers of not more than 8" in thickness, loose depth, and rolled until thoroughly compacted.

Rip rap wall to be made from the present concrete abutments broken up in pieces not less than 3" thick and shall be placed one upon the other with their flat surface roughly perpendicular to the slope. The rip rap shall be grout filled with a mixture to comply with item T-90, State Highway Specifications.

All materials and workmanship shall comply with the specifications of the State of Ohio, Dept. of Highways, in force on date of contract.

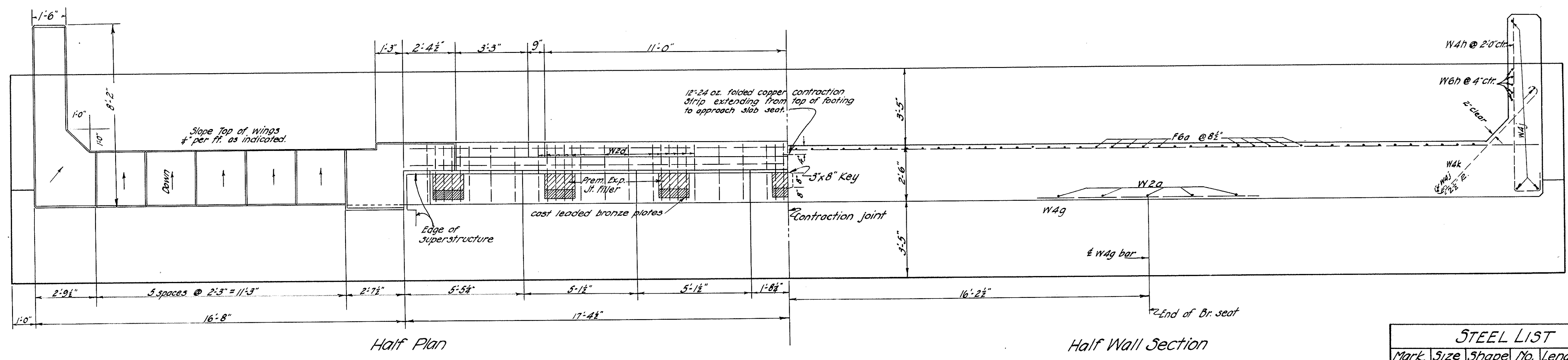
New concrete dam 25' in length to be constructed as directed by the Engineer

1900 Cu. Yds. New Channel Exc. Exc. to be used to fill old channel. Bank slopes 2:1. 1500 Cu. Yds. borrow for fill. Use material from old abutments for Rip Rap Wall.

The centerline of new bridge to be moved 30' South of present bridge.

old bridge to be carefully dismantled and piled neatly on the right of way at the disposal of the County Commissioners.

Test hole borings show yellow and blue clay.

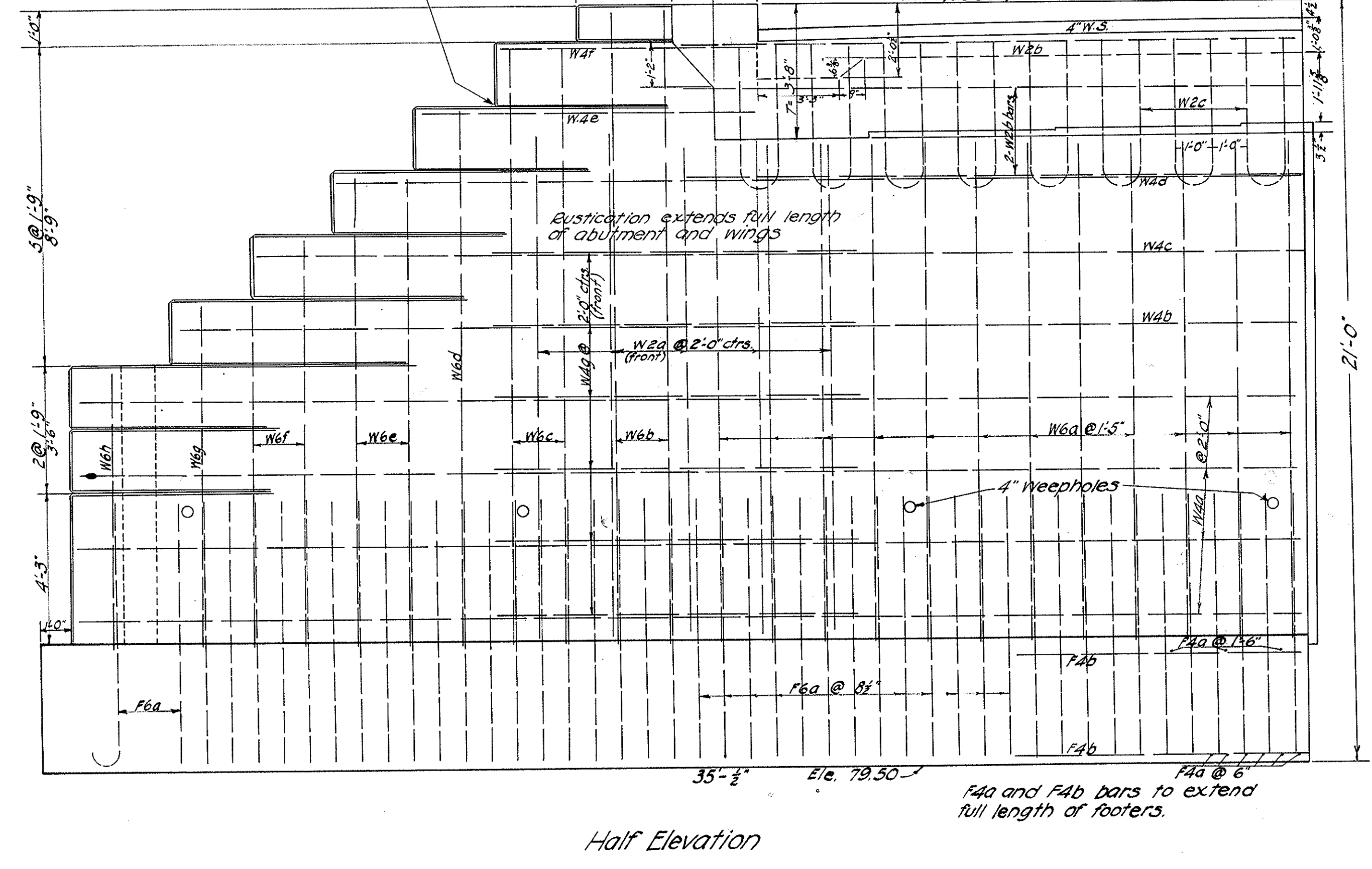


Half Plan

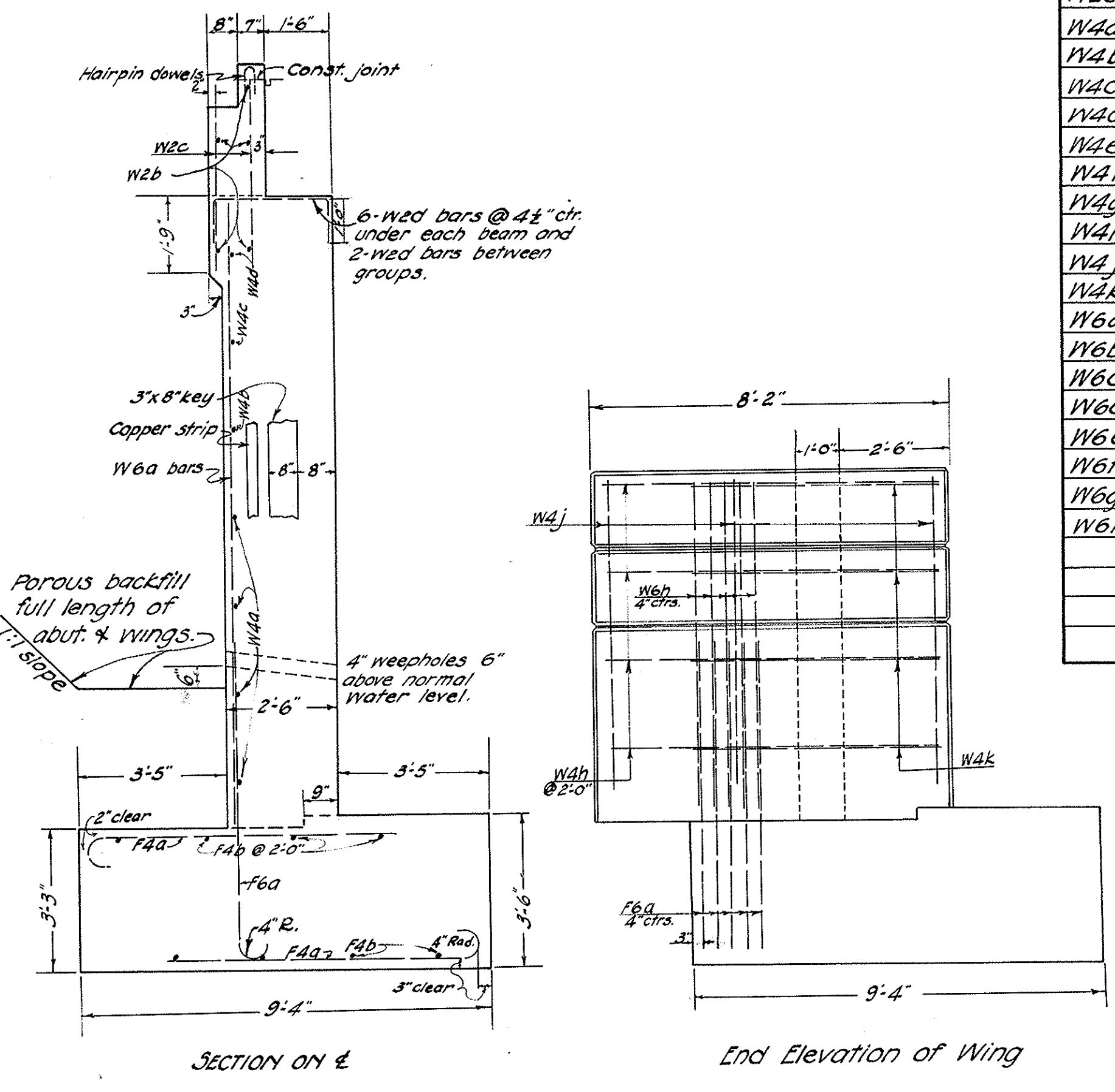
Half Wall Section

Concrete Mix - 1:6 1/2

STEEL LIST					
Mark	Size	Shape	No.	Length	Weight
F4a	3/8" φ	Bent	376	7'-11"	3125
F4b	3/8" φ	Strt.	32	34'-8"	1165
F6a	7/8" φ	Bent	196	8'-0"	3230
W2a	1/2" φ	Strt.	20	13'-4"	175
W2b	1/2" φ	Strt.	20	17'-0"	224
W2c	1/2" φ	Bent	64	8'-6"	359
W2d	1/2" φ	Bent	108	4'-3"	303
W4a	5/8" φ	Strt.	16	34'-0"	571
W4b	5/8" φ	Strt.	4	30'-6"	128
W4c	5/8" φ	Strt.	4	28'-6"	120
W4d	5/8" φ	Strt.	4	26'-6"	111
W4e	5/8" φ	Strt.	4	9'-0"	38
W4f	7/8" φ	Strt.	4	6'-9"	28
W4g	5/8" φ	Strt.	24	10'-0"	252
W4h	5/8" φ	Bent	16	9'-2"	154
W4j	5/8" φ	Strt.	20	7'-0"	147
W4k	5/8" φ	Bent	16	7'-9"	130
W6a	7/8" φ	Strt.	48	13'-9"	1360
W6b	7/8" φ	Strt.	8	17'-0"	280
W6c	7/8" φ	Strt.	8	16'-0"	264
W6d	7/8" φ	Strt.	4	14'-3"	117
W6e	7/8" φ	Strt.	8	12'-6"	206
W6f	7/8" φ	Strt.	8	11'-0"	181
W6g	7/8" φ	Strt.	4	9'-3"	76
W6h	7/8" φ	Strt.	24	7'-6"	371
Total					13115



Half Elevation

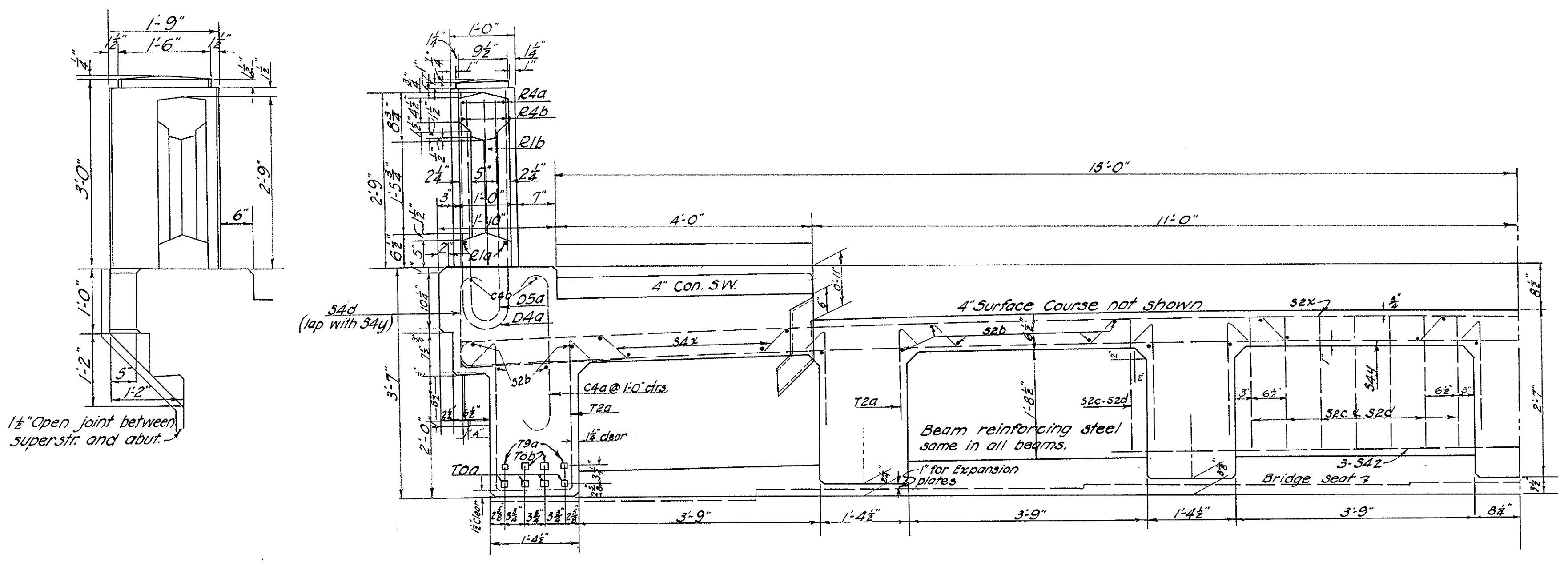


SECTION ON E

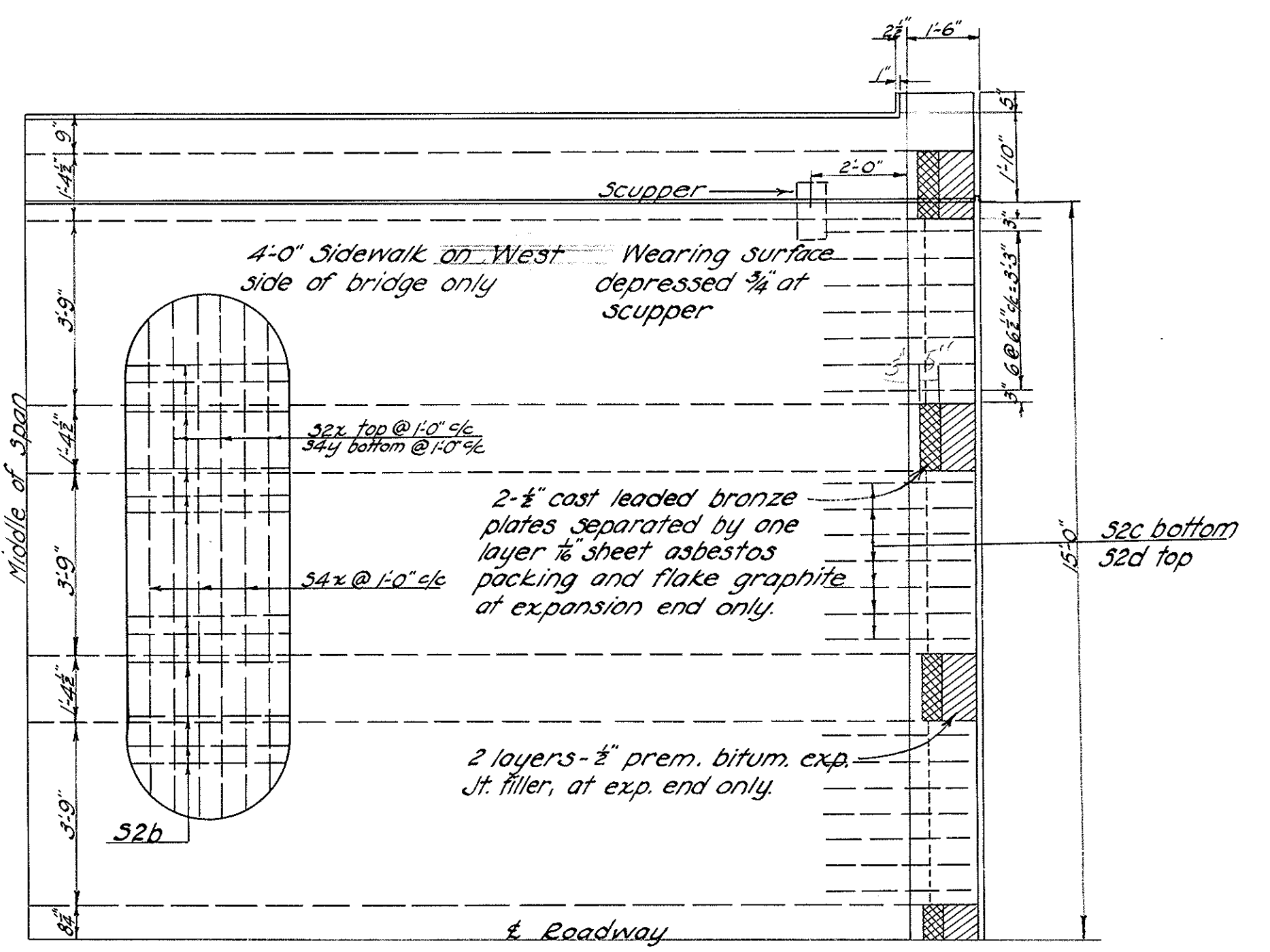
End Elevation of Wing

ABUTMENT PLANS
FOR
CURTICE BRIDGE
ON
ROAD #12 OVER CEDAR CREEK
CONC. BEAM 36' SPAN 30' RDWY.

Approved: *[Signature]*
Date: 6-27-55 County Surveyor
Drawn: D.J.H. Traced: D.J.H. Checked: *[Signature]*

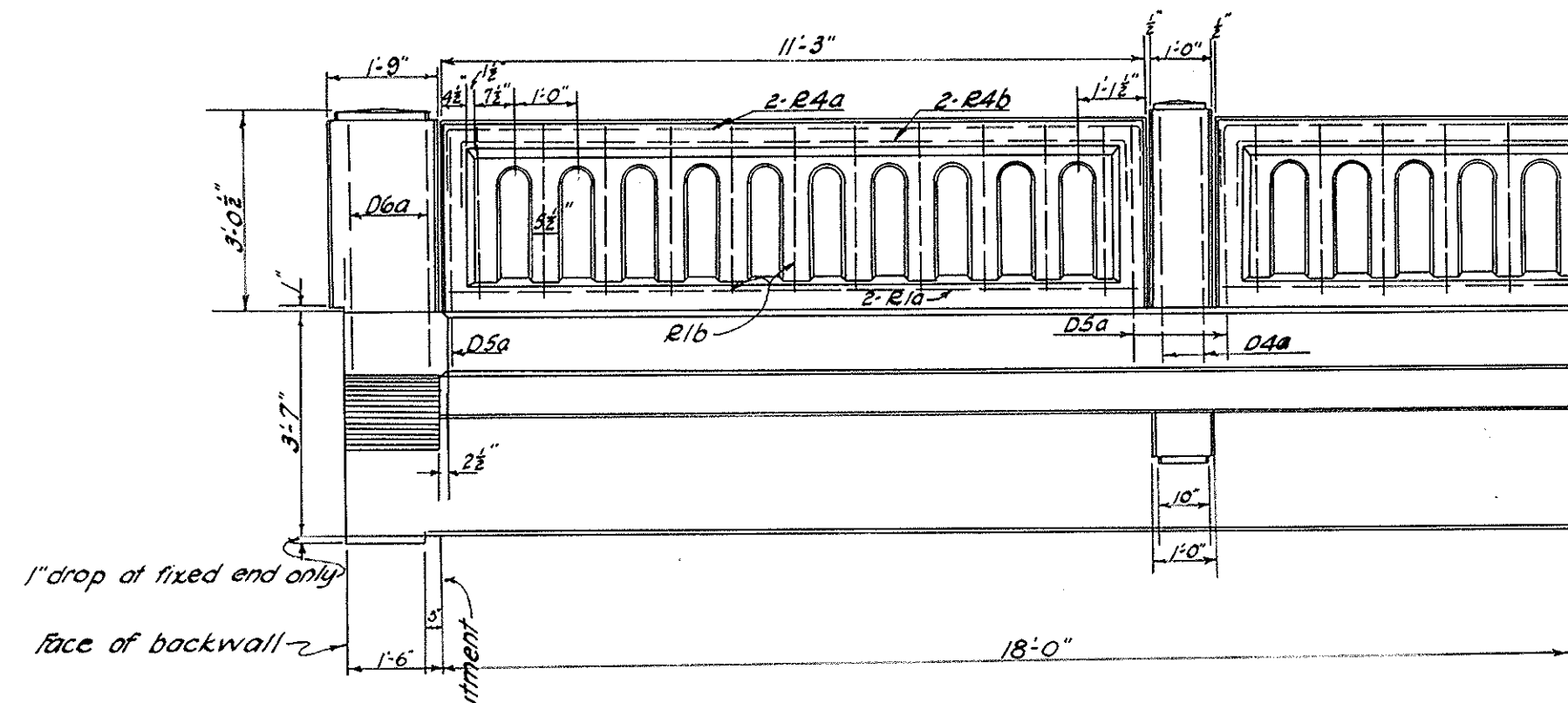


Half Cross Section - Roadway

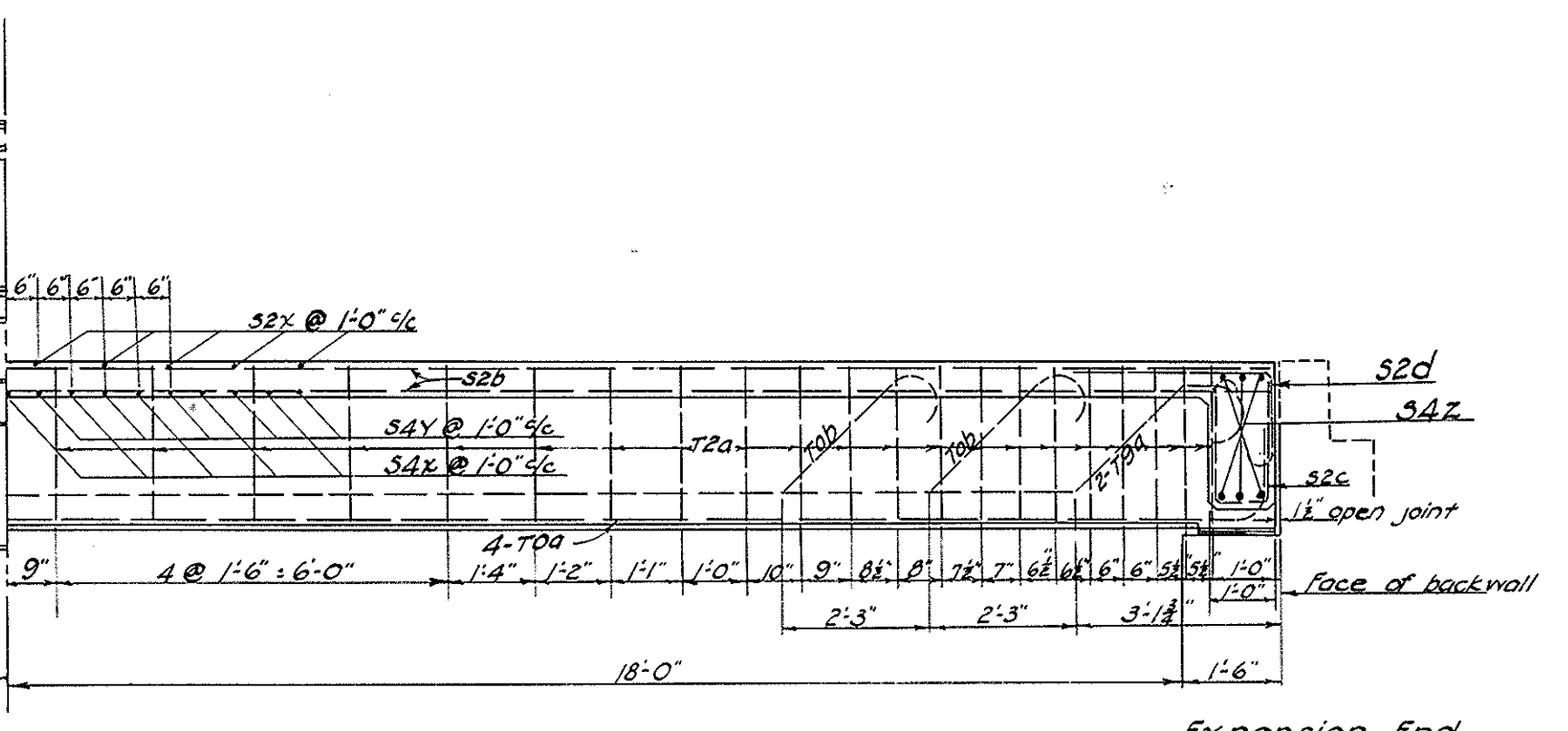


Quarter Plan - Roadway

Note: A slight camber shall be provided to insure against sag.
 Concrete Mix - 1.5 2.
 Exposed edges to have a chamfer of 3/8\"/>



Half Elevation - Outside Beam

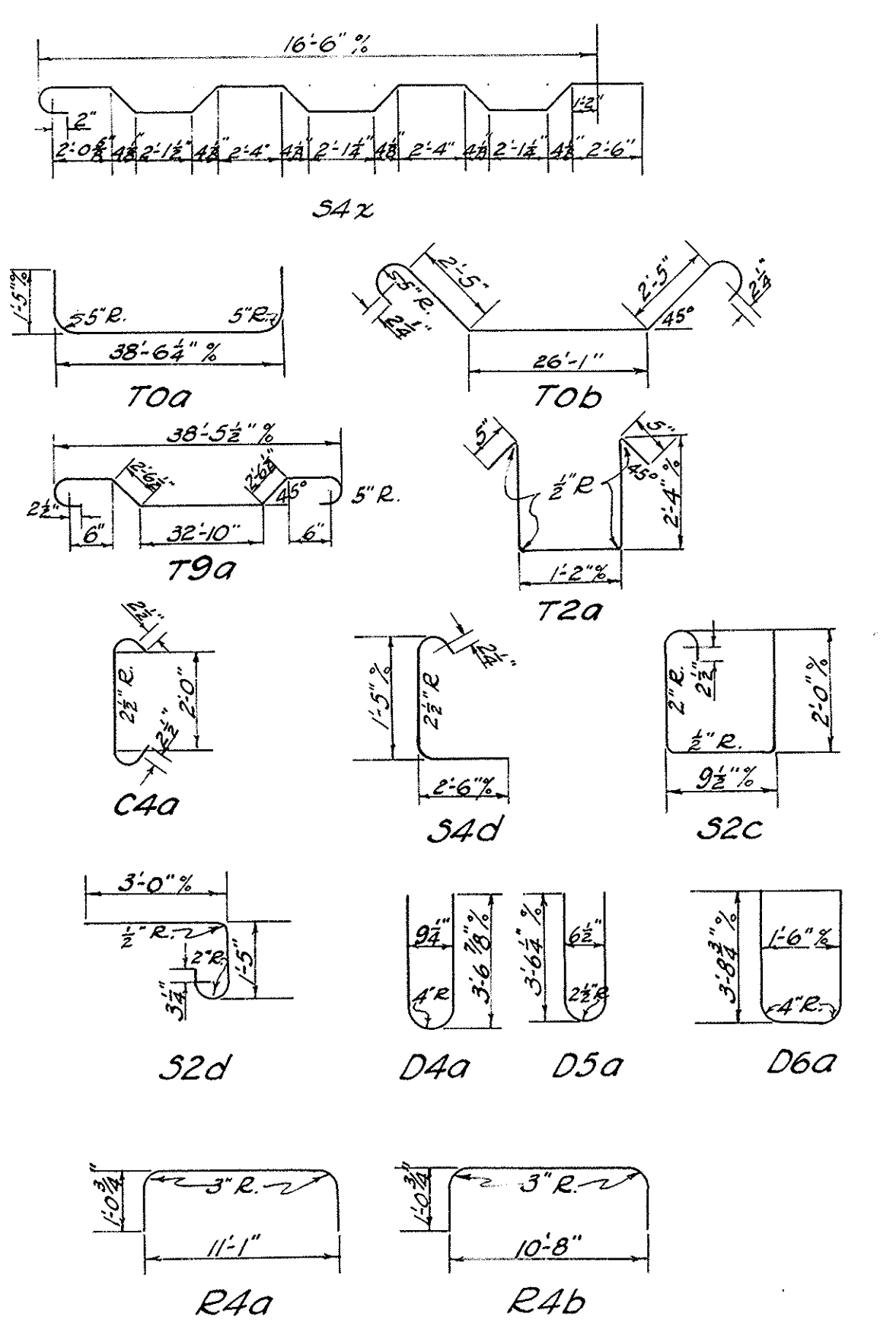


Half Elevation - Inside Beam

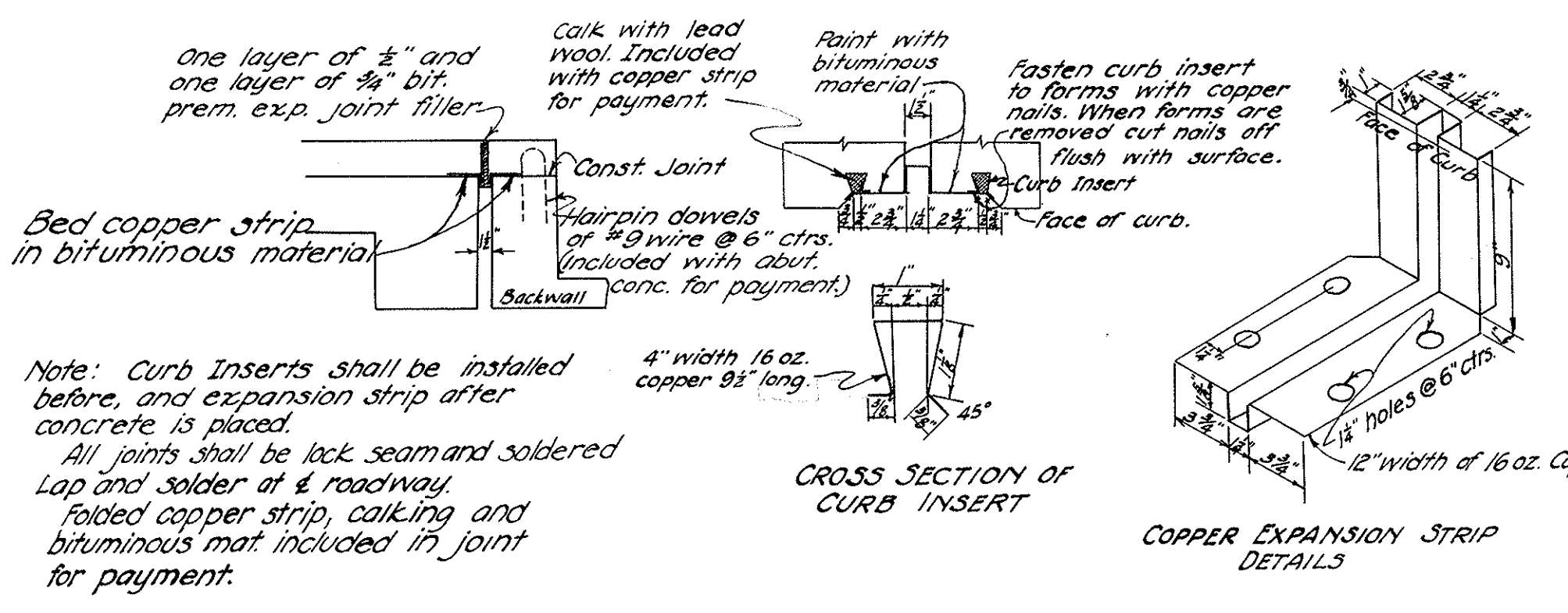
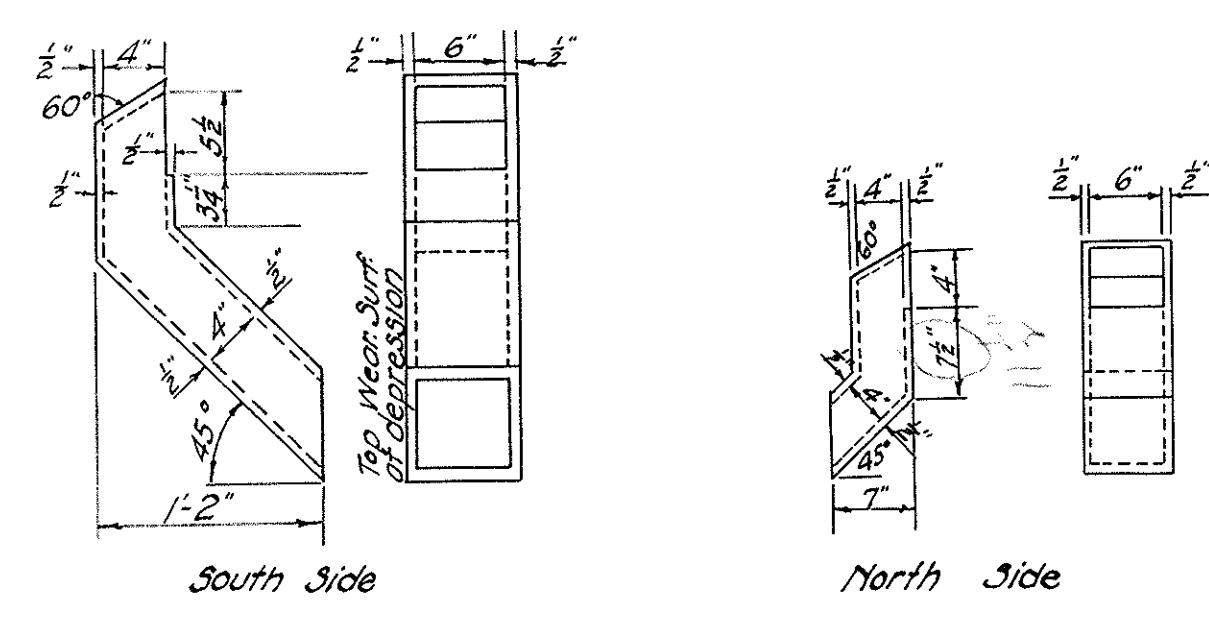
STEEL LIST

Mark	Size	Shape	No	Length	Weight
T0a	1 1/2"	Bent	28	40'-9"	6104
T0b	1 1/2"	Bent	14	34'-3"	2565
T9a	1 3/8"	Bent	14	42'-3"	2567
T2a	1/2"	Bent	294	6'-6"	1261
C4a	3/8"	Bent	78	3'-6"	287
C4b	3/8"	Str't	8	20'-0"	163
S4x	3/8"	Bent	74	19'-3"	1495
S4y	3/8"	Str't	36	33'-0"	1247
S4z	3/8"	Str't	12	31'-9"	400
S4d	3/8"	Bent	72	4'-3"	321
S2x	1/2"	Str't	36	33'-0"	784
S2b	1/2"	Str't	84	20'-0"	1109
S2c	1/2"	Bent	84	5'-3"	291
S2d	1/2"	Bent	84	5'-0"	277
D4a	3/8"	Bent	8	7'-6"	63
D5a	3/8"	Bent	12	7'-3"	132
D6a	3/8"	Bent	8	8'-6"	140
R1a	3/8"	Str't	12	11'-0"	50
R1b	3/8"	Str't	66	2'-6"	63
R4a	3/8"	Bent	12	13'-0"	164
R4b	3/8"	Bent	12	12'-8"	160
Total					19648

Bar Bending Diagrams



SCUPPER DETAILS
 1/2" Cast Iron



Bent reinforcing steel shall be measured along centerline of bar, unless noted. All radii to be measured inside.