

Ottawa County Engineer's Office

Ronald P. Lajti, Jr., P.E., P.S.
Ottawa County Engineer

8247 W. State Route 163
Oak Harbor, Ohio 43449

Phone: 419-734-6777
Fax: 419-734-6768

From: Ottawa County Engineer's Office
Date: February 14, 2022
Subject: Replacement of Bridge OTT-CR213-3.80 (CLA-213-3.80) Nissen Road over
Packer Creek
Questions and Answers #1

The following question has been submitted:

Question #1: "Are there any existing drawings available for reference for the existing structure?"

Answer: The existing plan sheet on file has been provided with this addendum.

Question #2: "Is there any records of what backfill material was used for the existing structure?"

Answer: Due to the age of the existing structure, no records are available regarding the backfill used.

If you have any questions please call the Ottawa County Engineer's Office at 419 734-6777.

Sincerely,



Ronald P. Lajti, Jr, P.E., P.S.
Ottawa County Engineer

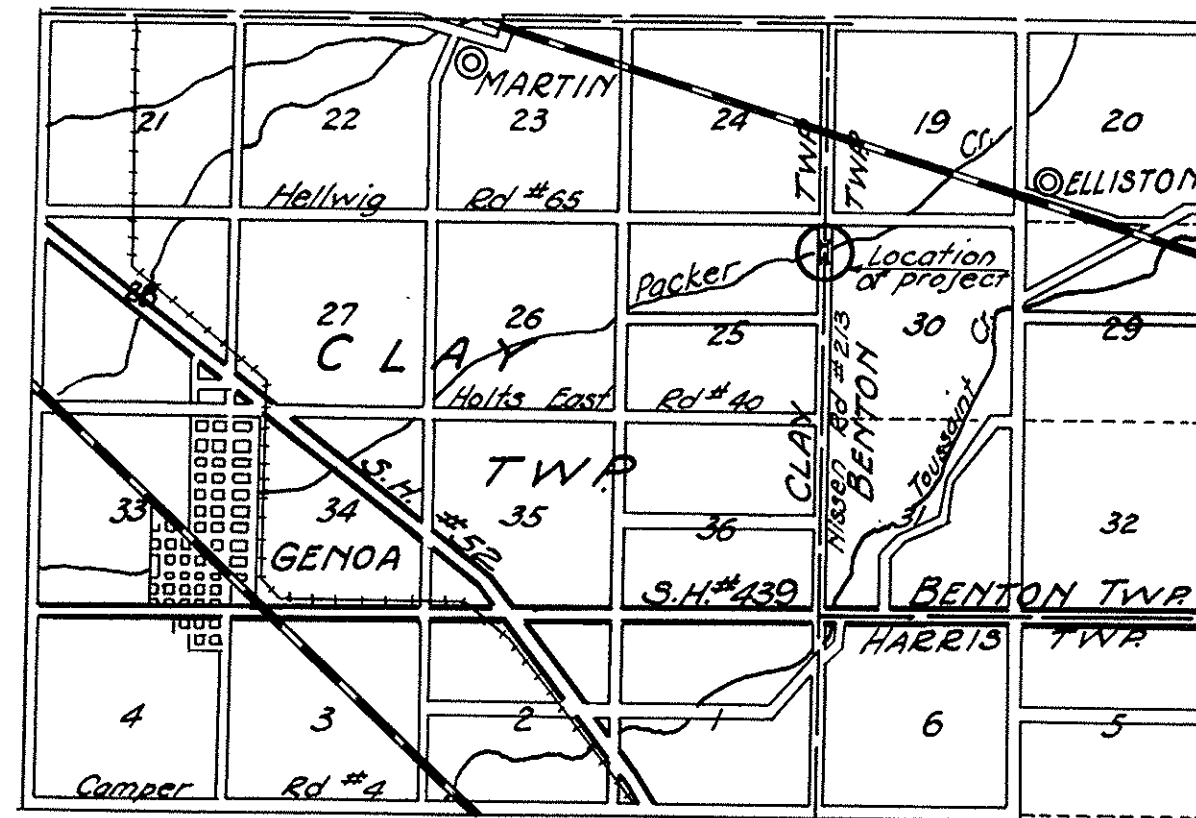
JPM

File

PLAN OF MULTI-PLATE ARCH BRIDGE OVER PACKER CREEK ON NISSEN RD. BRIDGE No. CL-213-1.80 1940

The Standard specifications of the State of Ohio, Department of Highways in force on date of contract shall govern this project.

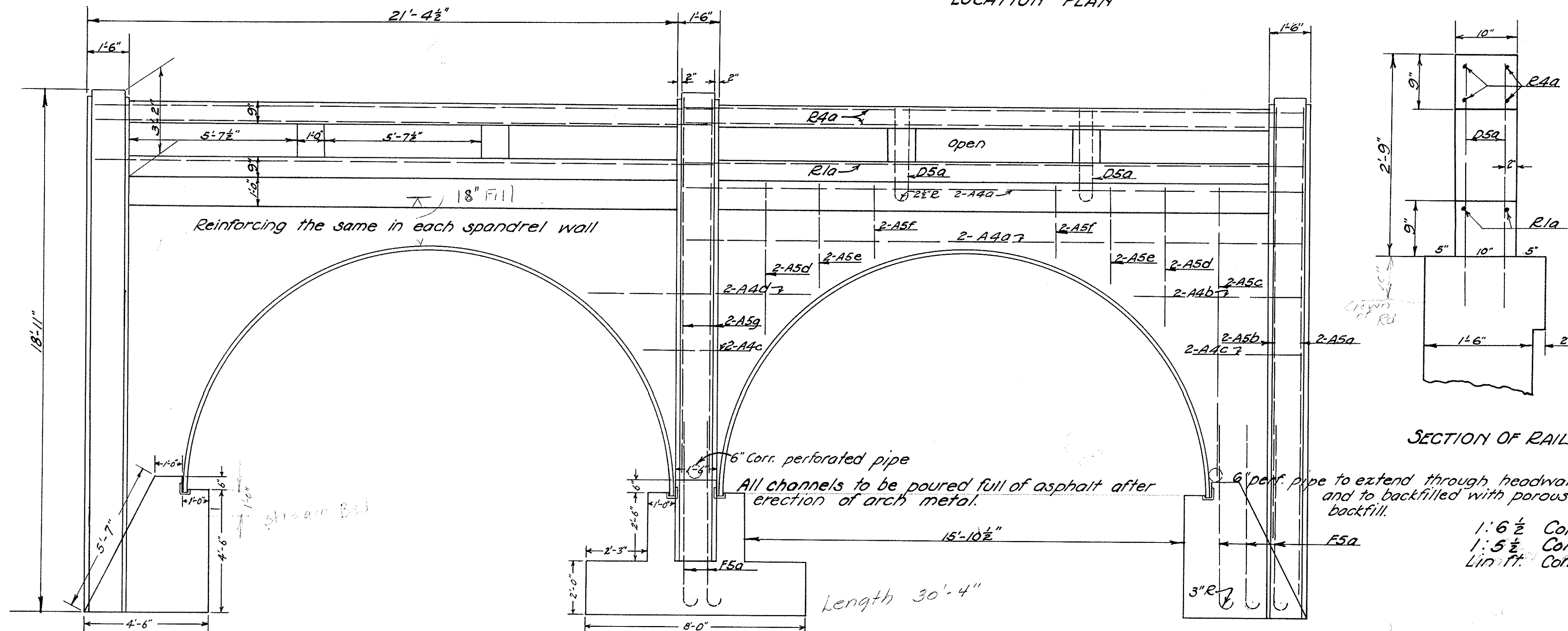
Old bridge to be carefully dismantled and placed neatly within the right of way for disposal by the County Engineer.



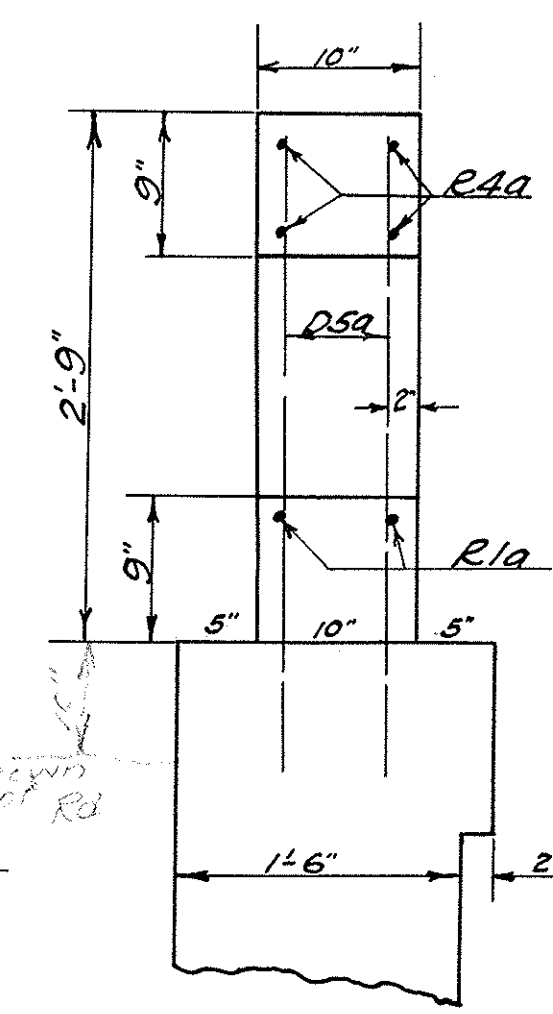
LOCATION PLAN

Approved: Royal E. Fetterman
Date: 11-9-40 Ottawa County Engineer

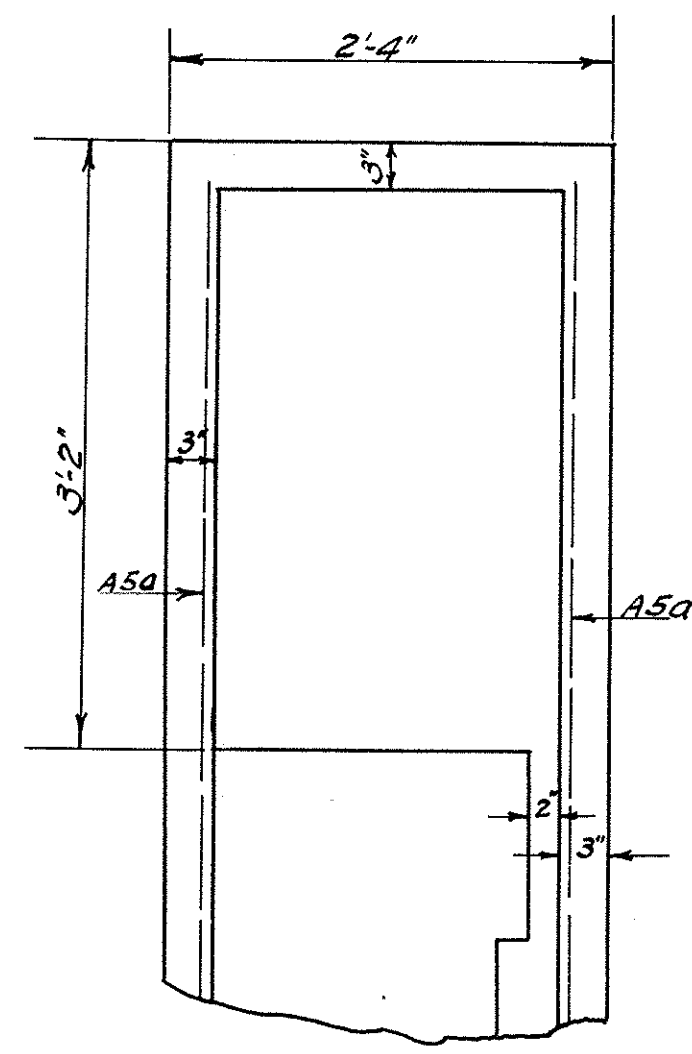
Approved: Wm. Miller
Date: 11-12-40 Fred. C. Smith
Clay Smith
Ottawa County Commissioners



END VIEW
Scale 3/8" = 1'



SECTION OF RAIL



END POST DETAIL

STEEL LIST					
Mark	Size	Shape	Length	Nº Req	Weight
A5a	3/4"	Str't.	17'-6"	8	210
A5b	3/4"	Str't.	15'-6"	8	185
A5c	3/4"	Str't.	10'-3"	8	345
A5d	3/4"	Str't.	5'-0"	16	125
A5e	3/4"	Str't.	3'-6"	16	120
A5f	3/4"	Str't.	2'-6"	16	85
A5g	3/4"	Str't.	18'-6"	8	60
F5a	3/4"	Bent	7'-2"	32	160
A4a	5/8"	Str't.	22'-4"	16	375
A4b	5/8"	Str't.	6'-0"	8	50
A4c	5/8"	Str't.	4'-0"	12	50
A4d	5/8"	Str't.	8'-0"	4	35
D5a	3/4"	Bent	6'-9"	16	160
R1a	3/8"	Str't.	22'-4"	8	70
R2a	3/8"	Str't.	22'-4"	16	375
Total lbs.					2405

1:6 1/2 Concrete mix in footers = 64.00 Cu. Yds.
1:5 1/2 Concrete mix in walls = 33.14 Cu. Yds.
Lin Ft. Concrete railing = 44'-3"