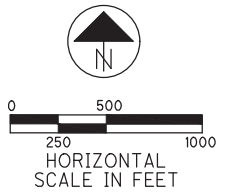


S:\Ditches\Lohrbach Ditch\22-015 Lohrbach Ditch - 6-Year Review\22-015 Lohrbach Ditch - CAD\22-015 Lohrbach Ditch_Plat.dwg 25-Aug-22 3:26 PM

**PROPERTY PLAT FOR:
LOHRBACH DITCH**
LOCATED IN SECTIONS 2 & 3, T6N, R15E, SALEM TOWNSHIP, AND
SECTIONS 34 & 35, T7N, R15E, SALEM TOWNSHIP,
OTTAWA COUNTY, OHIO
2022

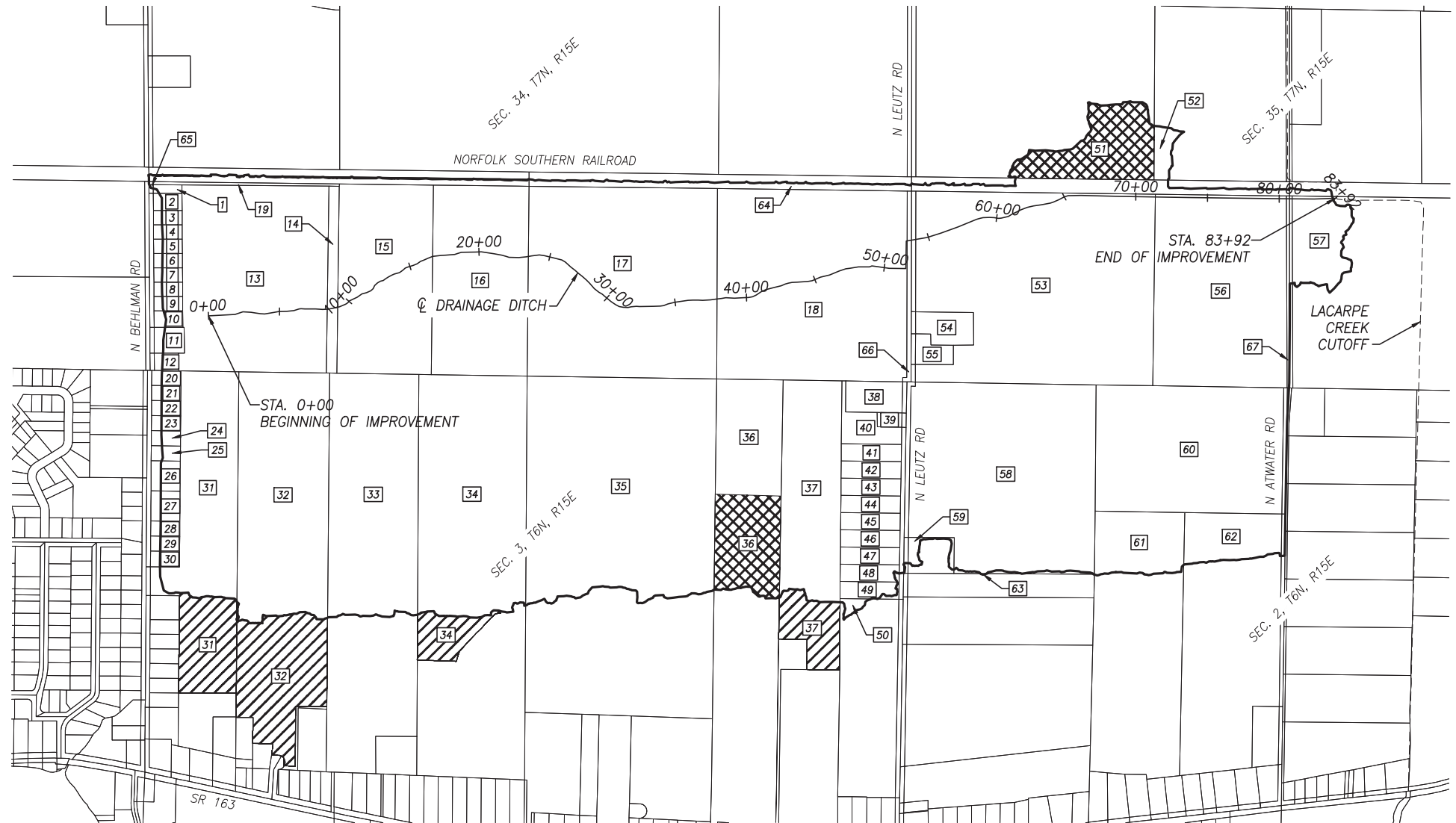


INDEX OF SHEETS

PROPERTY PLAT _____	1
PROPERTY PLAT INDEX _____	2

LEGEND:

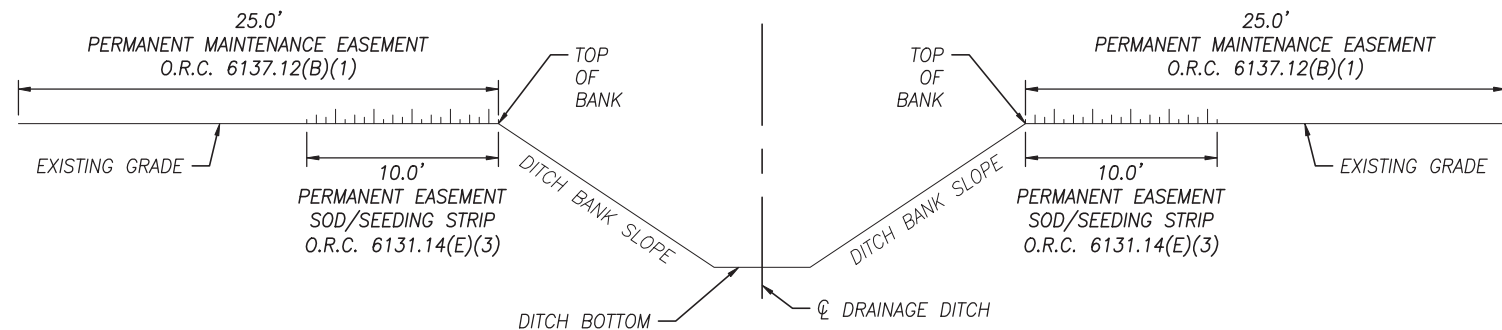
- WATERSHED BOUNDARY
- SURFACE DRAINAGE IN WATERSHED;
SUBSURFACE DRAINAGE EXITING WATERSHED (TILE OUT)
- SURFACE DRAINAGE EXITING WATERSHED;
SUBSURFACE DRAINAGE IN WATERSHED (TILE IN)



I HEREBY APPROVE THIS PLAT.

RONALD P. LAJTI, JR., P.E., P.S.
OTTAWA COUNTY ENGINEER

DATE



TYPICAL DRAINAGE IMPROVEMENT SECTION - OPEN DITCH

AUDITOR DITCH NO.
11-216

OSWCD DITCH NO.
-

OCE DITCH NO.
75

PROJECT NO.
OCE 22-015

LOHRBACH DITCH

PLAT REF. NO.	OWNER	R	T	S	PARCEL NUMBER	PROPERTY TYPE	DRAINAGE TYPE	ACRES OWNED	ACRES BENEFITED	PERMANENT MAINTENANCE (00-OPEN DITCH) (01-CLOSED DITCH)	10' PERMANENT EASEMENT SEEING/SOD STRIP ACRES (CALC. 01S.L.16)
1	JONES AURORA AKA AURORA MARTINEZ	15	7	34	026-10439-35104-001	RES	Surface	0.313	0.253		
2	MARTINEZ AURORA	15	7	34	026-05886-30959-000	RES	Surface	0.550	0.390		
3	JERRY L MILLER FARMS LLC	15	7	34	026-10439-35112-000	RES	Surface	0.460	0.324		
4	BOWSER ALAN 1/5 INT &	15	7	34	026-10439-35111-000	RES	Surface	0.460	0.317		
5	METCALF TIMOTHY A	15	7	34	026-10439-35110-000	RES	Surface	0.460	0.315		
6	ARTAGA ENRIQUE & JUDI S&T	15	7	34	026-10439-35109-000	RES	Surface	0.460	0.319		
7	LOECKEL BRYCE A	15	7	34	026-10439-35108-000	RES	Surface	0.460	0.325		
8	SHREMAN DONNA S	15	7	34	026-03867-30976-000	RES	Surface	0.460	0.329		
9	MOORE CHARLES J & TIFFANY N S&T	15	7	34	026-10439-35107-000	RES	Surface	0.460	0.319		
10	MECHAM ANNA M & PAUL C S&T	15	7	34	026-10439-35106-000	RES	Surface	0.540	0.324		
11	BLATT CONNOR J	15	7	34	026-19955-30323-000	RES	Surface	0.990	0.597		
12	PATRICK GREGORY A & SARA K S&T	15	7	34	026-19956-30322-000	RES	Surface	0.550	0.316		
13	BOWSER ALAN 1/5 INT &	15	7	34	026-10439-35104-000	AG	Surface	30.266	30.227	X	0.3830
14	GYDE-MARKS LTD	15	7	34	026-19957-30321-000	AG	Surface	2.151	2.151	X	0.0340
15	GYDE-MARKS LTD	15	7	34	026-05865-08481-000	AG	Surface	19.500	19.500	X	0.3510
16	BEHNKE FARMS LLC	15	7	34	026-05864-08474-000	AG	Surface	20.000	20.000	X	0.3090
17	BEHNKE JOSHUA J & KATELYN M	15	7	34	026-03204-29072-000	AG	Surface	40.000	40.000	X	0.6640
18	BEHNKE FARMS LLC	15	7	34	026-05855-08468-000	AG	Surface	40.000	40.000	X	0.7110
		15	6	3							
20	HODGES RUSSELL D & LYSAH S&T	15	6	3	026-10439-35099-005	RES	Surface	0.500	0.321		
21	HODGES RUSSELL & LYSAH M	15	6	3	026-10439-35099-008	RES	Surface	0.500	0.322		
22	HALL TERRY J JR & CASEY L MCLA	15	6	3	026-10439-35099-007	RES	Surface	0.500	0.322		
23	HALL TERRY J JR & CASEY L MCLA	15	6	3	026-10439-35099-009	RES	Surface	0.500	0.322		
24	LAMPF AUSTIN M	15	6	3	026-10439-35099-009	RES	Surface	0.500	0.318		
25	JENSEN RYAN M	15	6	3	026-10439-35099-010	RES	Surface	0.500	0.322		
26	HASSELBACH EDWIN K & JEANNAN M	15	6	3	026-10439-35099-011	RES	Surface	1.000	0.651		
27	LUTMAN RONNIE E	15	6	3	026-10439-35099-013	RES	Surface	1.000	0.646		
28	MARQUEZ MICHAEL R & DEBORAH S&	15	6	3	026-10439-35099-015	RES	Surface	0.500	0.322		
29	WEATHERMAX LESTER C & CYNTHIA	15	6	3	026-10439-35099-016	RES	Surface	0.500	0.325		
30	WEATHERMAX LESTER C & CYNTHIA	15	6	3	026-10439-35099-017	RES	Surface	0.500	0.340		
31	BOWSER ALAN 1/5 INT &	15	6	3	026-10439-35099-001	AG	Surface	24.683	15.064		
	BOWSER ALAN 1/5 INT &	15	6	3	026-10439-35099-001	AG	Tile In	24.683	6.196		
32	GYDE-MARKS LTD	15	6	3	026-02031-02119-001	AG	Surface	35.980	24.750		
33	GYDE-MARKS LTD	15	6	3	026-02031-02119-001	AG	Tile In	35.980	11.443		
34	BEHNKE FARMS LLC	15	6	3	026-05865-07682-002	AG	Surface	38.541	24.145		
34	BEHNKE FARMS LLC	15	6	3	026-05864-07681-000	AG	Surface	48.090	28.728		
	BEHNKE FARMS LLC	15	6	3	026-05864-07681-000	AG	Tile In	48.090	2.834		
35	BOWSER ALAN 1/5 INT &	15	6	3	026-05857-07674-023	AG	Surface	71.152	45.854		
36	BEHNKE JENNIFER L TRUSTEE	15	6	3	026-03204-29070-001	AG	Surface	33.057	15.635		
	BEHNKE JENNIFER L TRUSTEE	15	6	3	026-03204-29070-001	AG	Tile Out	33.057	7.095		
37	BEHNKE FARMS LLC	15	6	3	026-05855-07672-001	AG	Surface	19.263	14.431		
	BEHNKE FARMS LLC	15	6	3	026-05855-07672-001	AG	Tile In	19.263	4.011		
38	ROSE ARTHUR II	15	6	3	026-20417-32703-000	RES	Surface	2.000	1.970		
39	ROLLHEISER LESLIE E &	15	6	3	026-05841-07651-000	RES	Surface	0.410	0.397		
40	HINKLE BETH A	15	6	3	026-01616-01774-000	RES	Surface	1.867	1.867		
41	BOATS AND DOES LLC	15	6	3	026-04800-34489-000	RES	Surface	1.154	1.154		
42	SMITH JAMES R III	15	6	3	026-04800-34480-000	RES	Surface	1.154	1.151		
43	KOHLMAN MICHAEL A & SHERYL	15	6	3	026-01623-01784-000	RES	Surface	1.154	1.148		
44	FLEENOR JAMES	15	6	3	026-04800-34482-000	RES	Surface	1.154	1.145		
45	YOUNGS SUBURBAN ESTATES INC	15	6	3	026-04800-34483-000	RES	Surface	1.154	1.143		
46	YOUNGS SUBURBAN EST INC	15	6	3	026-04800-34484-000	RES	Surface	1.154	1.140		
47	YOUNGS SUBURBAN EST INC	15	6	3	026-04800-34485-000	RES	Surface	1.154	1.137		
48	YOUNGS SUBURBAN EST INC	15	6	3	026-04800-34486-000	RES	Surface	1.154	1.090		
49	YOUNGS SUBURBAN EST INC	15	6	3	026-04800-34487-000	RES	Surface	1.154	1.016		
50	YOUNGS SUBURBAN ESTATES INC	15	6	3	026-16851-30908-000	RES	Surface	13.400	0.334		
		15	7	35							
51	BEHNKE FARMS LLC	15	7	35	026-21042-34736-000	AG	Tile Out	46.052	7.814		
52	BOLAY KENNETH L & LINDA K S&T	15	7	35	026-06538-08534-000	AG	Surface	28.500	1.105		
53	BEHNKE FARMS LLC	15	7	35	026-21042-34735-000	AG	Surface	47.076	47.076	X	0.7940
54	BEHNKE FARMS LLC	15	7	35	026-21042-34735-001	RES	Surface	2.025	1.948		
55	S.M. OF OTTAWA COUNTY LLC	15	7	35	026-21042-34735-002	RES	Surface	1.148	1.010		
56	NEIDER JAMES TRUSTEE	15	7	35	026-06548-08532-000	AG	Surface	28.500	28.390	X	0.2100
57	GRIEGER KURT F & ANITA LOLA M GRIEGER (LE)	15	7	35	026-12721-27305-000	AG	Surface	60.000	5.265	X	0.0690
		15	6	2							
58	BEHNKE JENNIFER L TOD	15	6	2	026-05805-07601-000	AG	Surface	34.919	34.919		
59	WENTLING PAUL & CAROL S&T	15	6	2	026-05805-07601-001	RES	Surface	2.009	0.540		
60	SCHRADER LAWRENCE JR TOD	15	6	2	026-05780-07571-000	AG	Surface	26.845	26.377		
61	JESS ROBERT & CAROLE P 1/2 INTS&T	15	6	2	026-05780-07593-000	AG	Surface	26.706	6.118		
62	WARNCKE JUDY TRUSTEE 1/2 INT AND	15	6	2	026-05780-07593-001	AG	Surface	26.845	5.027		
63	WENTLING PAUL & CAROL S&T CAUV 77	15	6	2	026-05805-07601-002	AG	Surface	5.029	0.004		
19	NORFOLK SOUTHERN RAILROAD				027-19086-31335-000	R/W	Surface	0.565	0.565		
64	NORFOLK SOUTHERN RAILROAD				027-19086-31335-000	R/W	Surface	9.869	9.869	X	0.4290
65	SALEM TOWNSHIP TRUSTEES - BELMAN ROAD				028-19098-25843-000	R/W	Surface	0.027	0.027		
66	SALEM TOWNSHIP TRUSTEES - NORTH LEUTZ ROAD				028-19098-25843-000	R/W	Surface	3.671	3.671	X	0.0280
67	SALEM TOWNSHIP TRUSTEES - ATWATER ROAD				028-19098-25843-000	R/W	Surface	1.562	1.562	X	0.0180