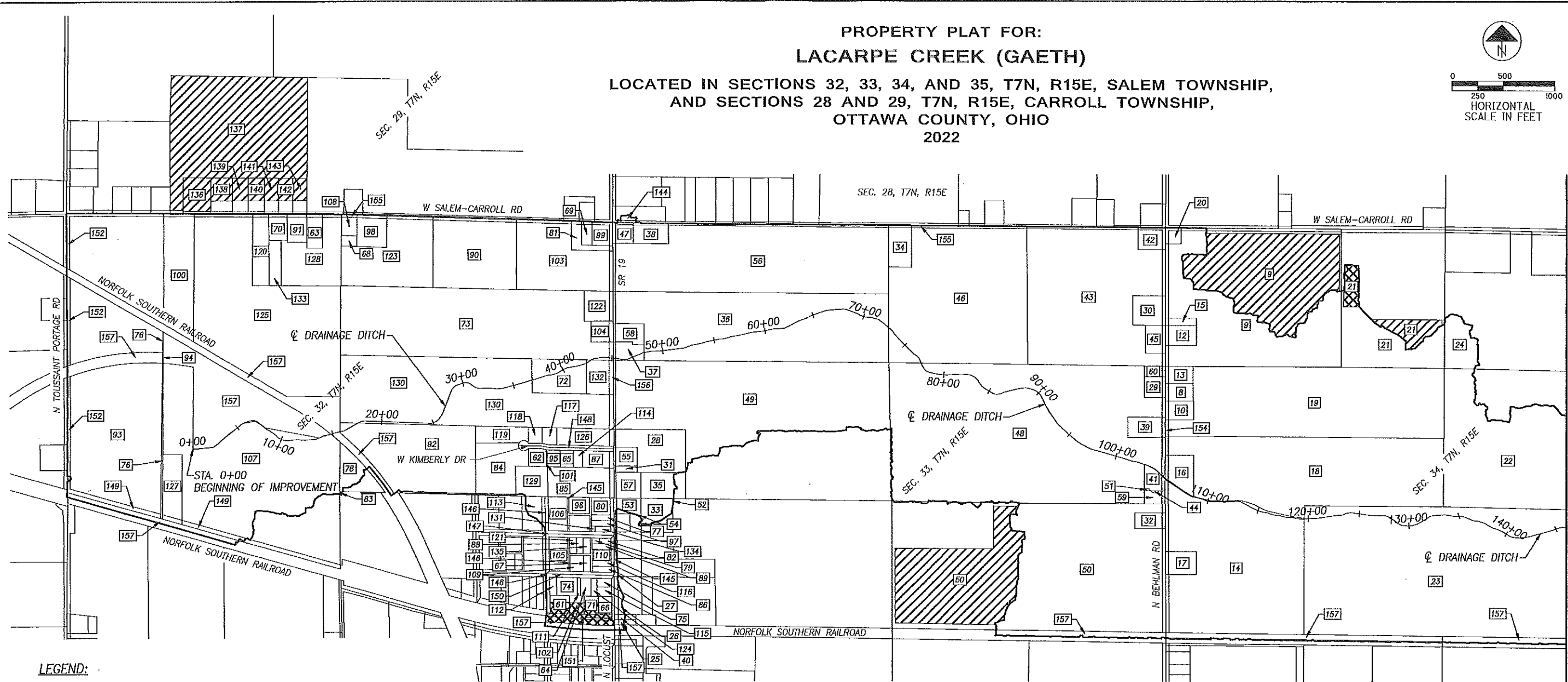
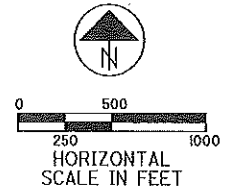


PROPERTY PLAT FOR:
LACARPE CREEK (GAETH)
 LOCATED IN SECTIONS 32, 33, 34, AND 35, T7N, R15E, SALEM TOWNSHIP,
 AND SECTIONS 28 AND 29, T7N, R15E, CARROLL TOWNSHIP,
 OTTAWA COUNTY, OHIO
 2022



LEGEND:

- WATERSHED BOUNDARY
- SURFACE DRAINAGE IN WATERSHED;
SUBSURFACE DRAINAGE EXITING WATERSHED (TILE OUT)
- SURFACE DRAINAGE EXITING WATERSHED;
SUBSURFACE DRAINAGE IN WATERSHED (TILE IN)

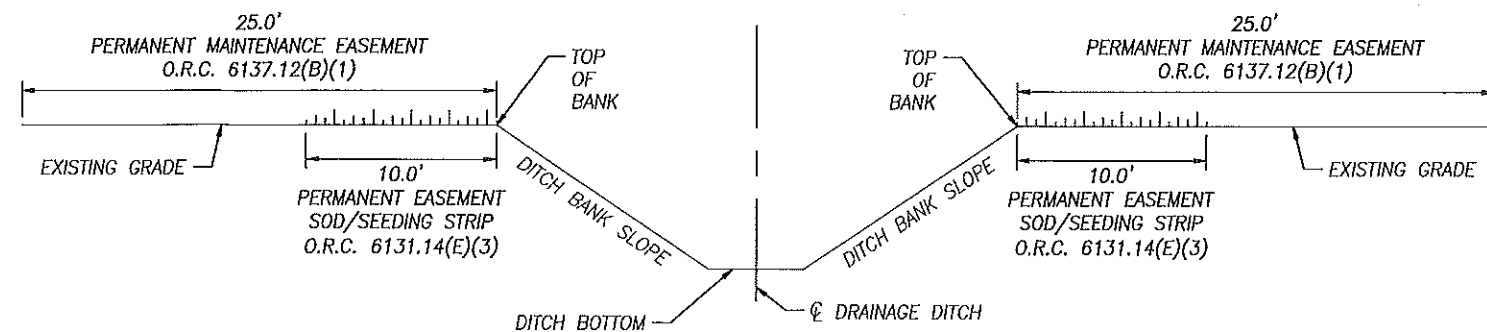
I HEREBY APPROVE THIS PLAT.

 RONALD P. LAJTI, JR., P.E., P.S.
 OTTAWA COUNTY ENGINEER

 DATE

INDEX OF SHEETS

PROPERTY PLAT _____ 1-2
 PROPERTY PLAT INDEX _____ 3



TYPICAL DRAINAGE IMPROVEMENT SECTION - OPEN DITCH

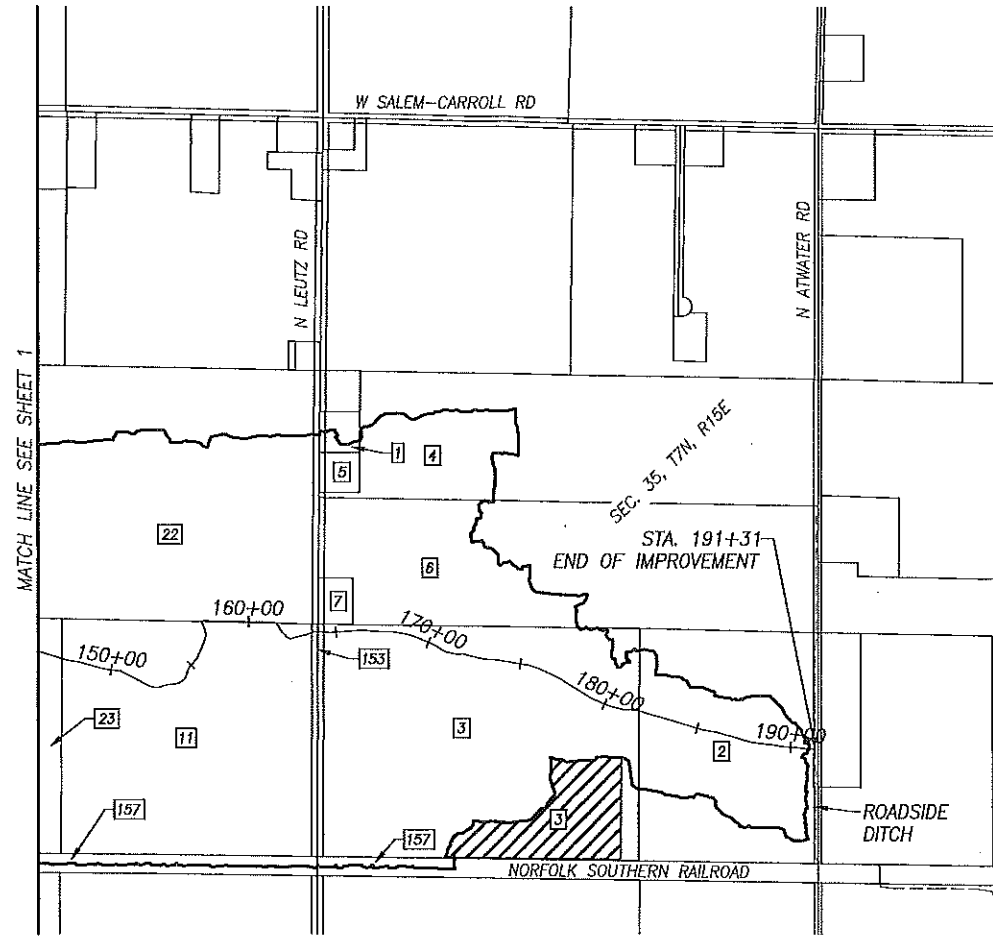
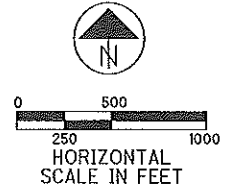
D:\Ditches\LaCarpe_Gaeth\22-029_LaCarpe_Creek_Gaeth - 6-Year Review\22-029_LaCarpe_Creek_Gaeth - CAD\22-029_LaCarpe_Gaeth_Plat.dwg 07-Jun-23 4:26 PM

PROJECT NO. OCE 22-029
 MATCH LINE SEE SHEET 2
 OSWCD DITCH NO. 71
 AUDITOR DITCH NO. 11-211

LACARPE CREEK (GAETH)

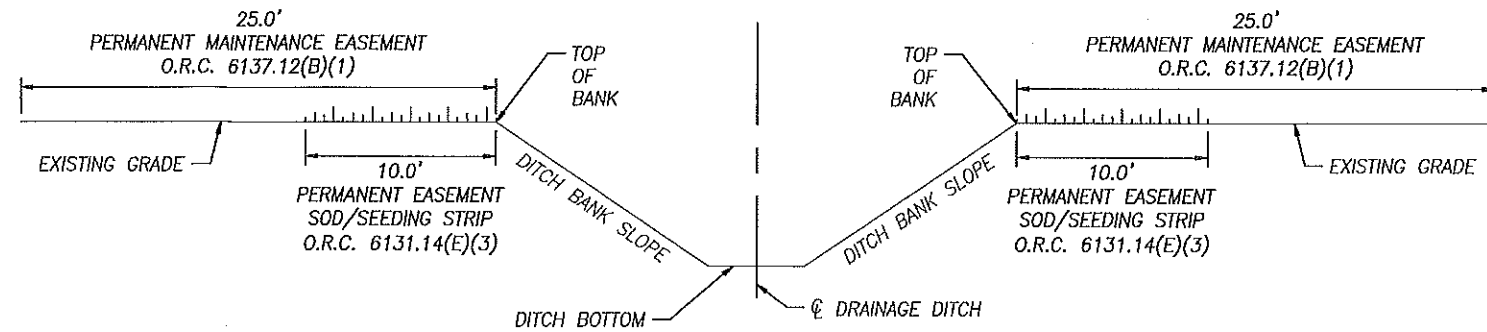
PROPERTY PLAT FOR:
LACARPE CREEK (GAETH)

LOCATED IN SECTIONS 32, 33, 34, AND 35, T7N, R15E, SALEM TOWNSHIP,
 AND SECTIONS 28 AND 29, T7N, R15E, CARROLL TOWNSHIP,
 OTTAWA COUNTY, OHIO
 2022



LEGEND:

- WATERSHED BOUNDARY
- SURFACE DRAINAGE IN WATERSHED;
SUBSURFACE DRAINAGE EXITING WATERSHED (TILE OUT)
- SURFACE DRAINAGE EXITING WATERSHED;
SUBSURFACE DRAINAGE IN WATERSHED (TILE IN)



TYPICAL DRAINAGE IMPROVEMENT SECTION - OPEN DITCH

C:\Ditches\LaCarpe Gaeth\22-029 LaCarpe Creek Gaeth - 6-Year Review\22-029 LaCarpe Creek Gaeth - CAD\22-029-LaCarpe_Gaeth_Plat.dwg 07-Jun-23 4:26 PM

PROPERTY PLAT

LACARPE CREEK (GAETH)

CALCULATED
 JTM
 CHECKED
 DBT

Table with columns: PLAT REF. NO., OWNER, R T S, PARCEL NUMBER, PROPERTY TYPE, DRAINAGE TYPE, ACRES OWNED, ACRES BENEFITED, PERMANENT MAINTENANCE EASEMENT (00=OPEN DITCH, 02=CLOSED DITCH), 10' PERMANENT EASEMENT SEEDING/SDO STRIP ACRES (O.A.C. 6131.14)

Table with columns: PLAT REF. NO., OWNER, R T S, PARCEL NUMBER, PROPERTY TYPE, DRAINAGE TYPE, ACRES OWNED, ACRES BENEFITED, PERMANENT MAINTENANCE EASEMENT (00=OPEN DITCH, 02=CLOSED DITCH), 10' PERMANENT EASEMENT SEEDING/SDO STRIP ACRES (O.A.C. 6131.14)