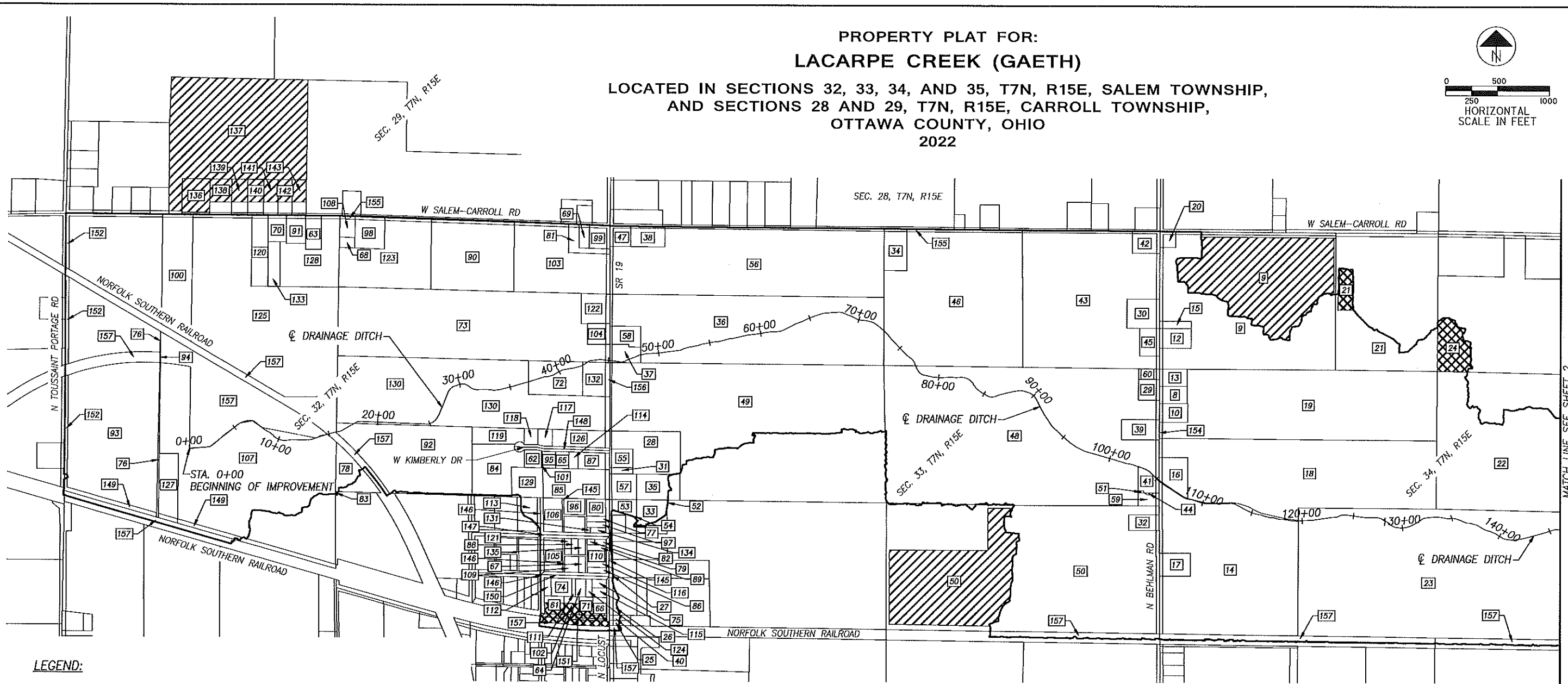
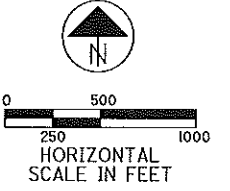


**PROPERTY PLAT FOR:
LACARPE CREEK (GAETH)**
LOCATED IN SECTIONS 32, 33, 34, AND 35, T7N, R15E, SALEM TOWNSHIP,
AND SECTIONS 28 AND 29, T7N, R15E, CARROLL TOWNSHIP,
OTTAWA COUNTY, OHIO
2022



- LEGEND:**
- WATERSHED BOUNDARY
 - SURFACE DRAINAGE IN WATERSHED;
SUBSURFACE DRAINAGE EXITING WATERSHED (TILE OUT)
 - SURFACE DRAINAGE EXITING WATERSHED;
SUBSURFACE DRAINAGE IN WATERSHED (TILE IN)

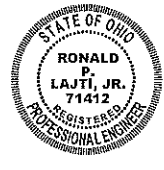

INDEX OF SHEETS

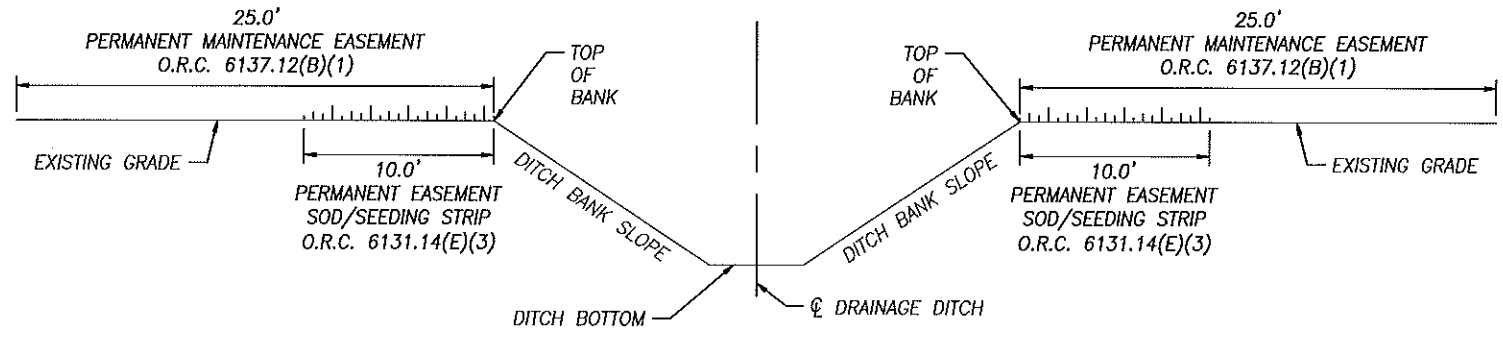
PROPERTY PLAT _____	1-2
PROPERTY PLAT INDEX _____	3

I HEREBY APPROVE THIS PLAT.

RONALD P. LAJTI, JR., P.E., P.S.
OTTAWA COUNTY ENGINEER

DATE



TYPICAL DRAINAGE IMPROVEMENT SECTION - OPEN DITCH

S:\Ditches\LaCarpe Creek Gaeth - 6-Year Review\22-029 LaCarpe Creek Gaeth - CAD\22-029 LaCarpe Creek Gaeth_Plat.dwg 14-Jul-23 12:40 PM

PROJECT NO. **OCE 22-029**

MATCH LINE SEE SHEET 2

OSWCO DITCH NO. **71**

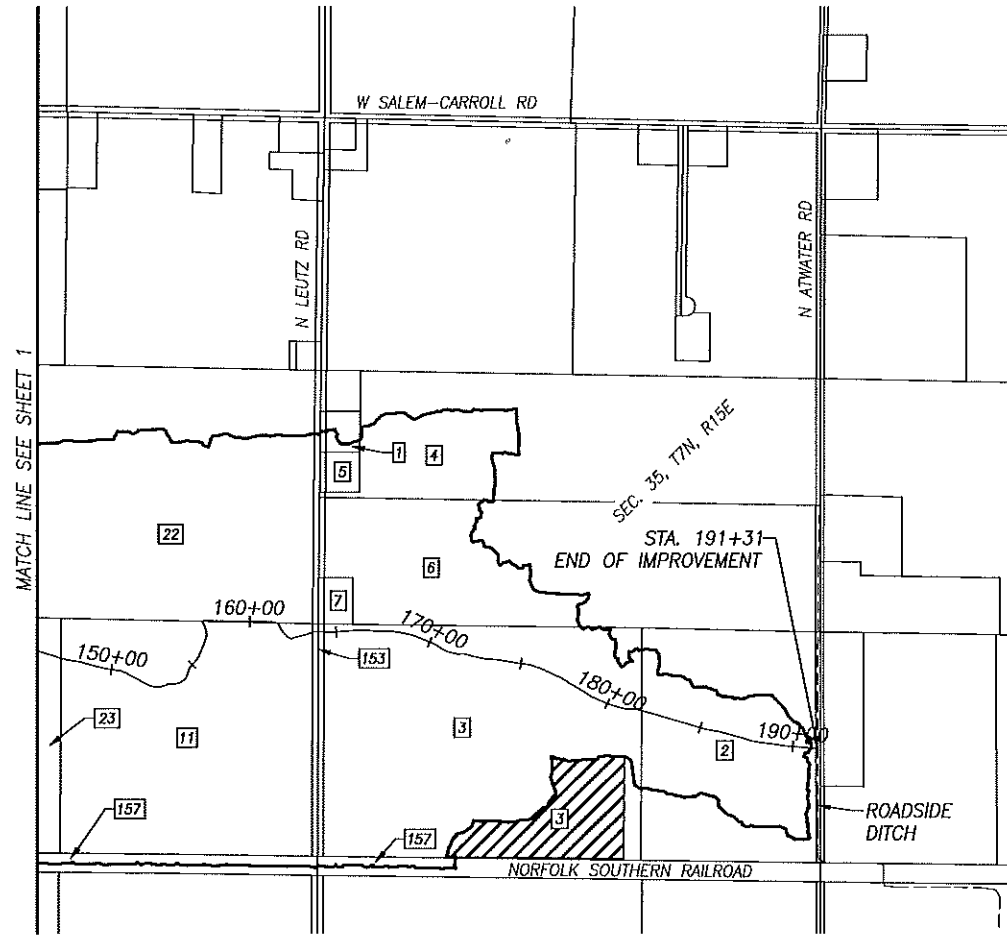
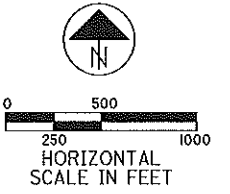
AUDITOR DITCH NO. **11-211**

LACARPE CREEK (GAETH)




1
3

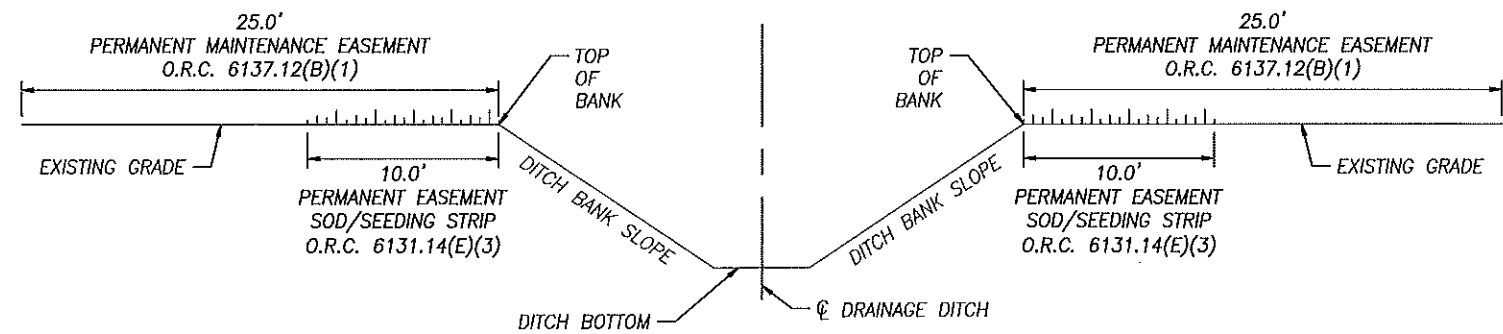
PROPERTY PLAT FOR:
LACARPE CREEK (GAETH)

LOCATED IN SECTIONS 32, 33, 34, AND 35, T7N, R15E, SALEM TOWNSHIP,
 AND SECTIONS 28 AND 29, T7N, R15E, CARROLL TOWNSHIP,
 OTTAWA COUNTY, OHIO
 2022



LEGEND:

-  WATERSHED BOUNDARY
-  SURFACE DRAINAGE IN WATERSHED;
SUBSURFACE DRAINAGE EXITING WATERSHED (TILE OUT)
-  SURFACE DRAINAGE EXITING WATERSHED;
SUBSURFACE DRAINAGE IN WATERSHED (TILE IN)



TYPICAL DRAINAGE IMPROVEMENT SECTION - OPEN DITCH

S:\Ditches\LaCarpe Gaeth\22-029 LaCarpe Creek Gaeth - 6-Year Review\22-029 LaCarpe Creek Gaeth - CAD\22-029 LaCarpe Creek Gaeth - Plat.dwg 14-Jul-23 12:40 PM

PROPERTY PLAT

LACARPE CREEK
(GAETH)

CALCULATED
JTM
CHECKED
DBT

2
3

