

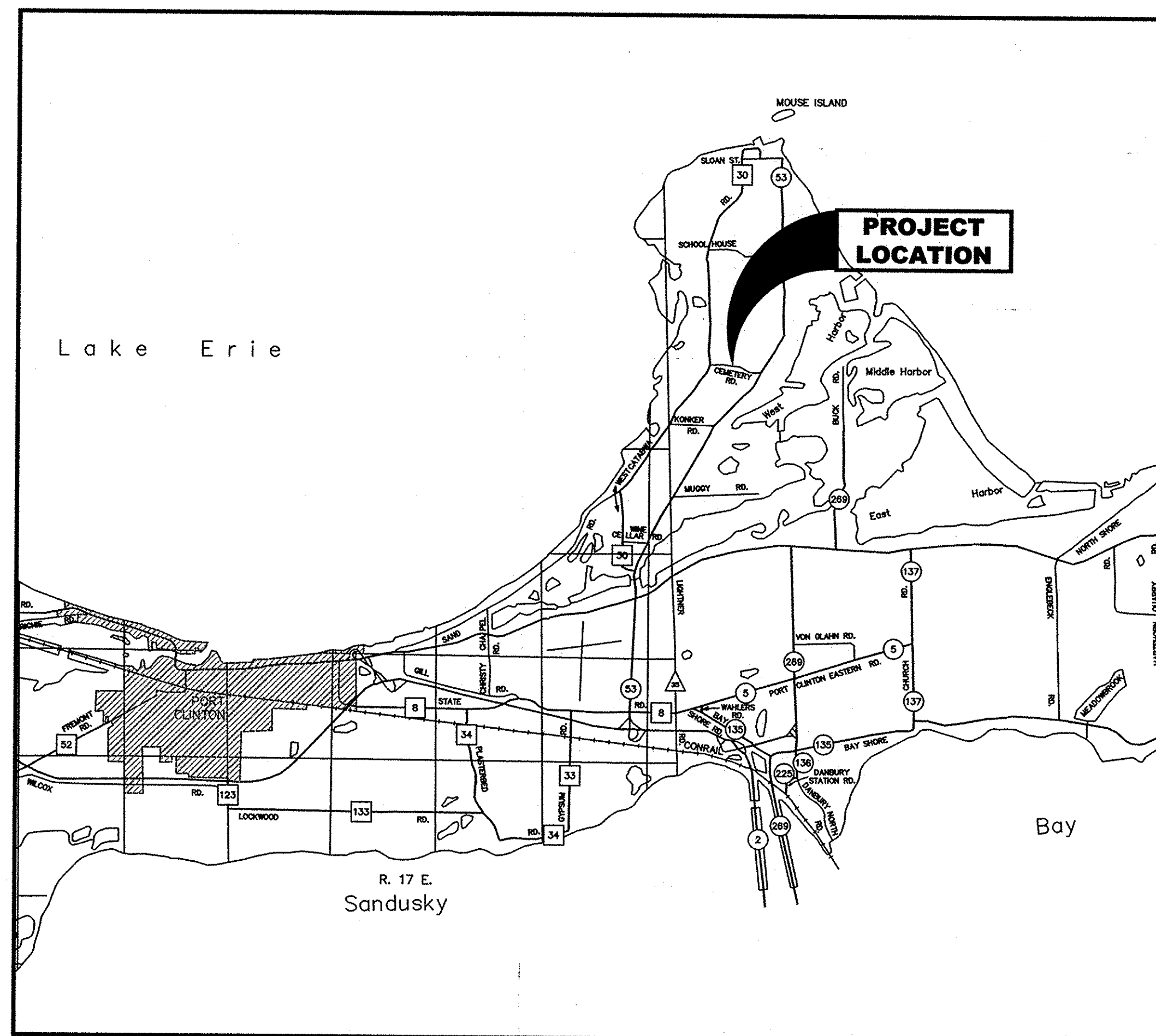
PARKING LOT PAVEMENT REPLACEMENT PROJECT FOR CATAWBA ISLAND TOWNSHIP HALL, CATAWBA ISLAND TOWNSHIP, OTTAWA COUNTY, OHIO ~2012~

PROJECT DESCRIPTION

REPLACE EXISTING ASPHALT CONCRETE PAVEMENT SURROUNDING THE CATAWBA ISLAND TOWNSHIP FIRE HALL AND MAINTENANCE GARAGE. WORK INVOLVED WILL INCLUDE REMOVAL OF EXISTING PAVEMENT AND BASE, INSTALLATION OF UNDERDRAIN PIPE, INSTALLATION OF NEW AGGREGATE BASE AND PLACEMENT OF NEW ASPHALT CONCRETE PAVEMENT.

UNDERGROUD UTILITIES

2 WORKING DAYS
BEFORE YOU DIG
CALL 1-800-362-2764 (TOLL FREE)
OHIO UTILITIES PROTECTION SERVICE
NON-MEMBERS MUST BE CALLED DIRECTLY



INDEX OF SHEETS


TITLE SHEET	1
GENERAL NOTES	2
GENERAL SUMMARY	3
SITE PLAN	4
PAVEMENT REMOVAL PLAN	5
PAVING DETAIL PLAN	6
DRAINAGE DETAILS	7

APPROVALS


WE THE TRUSTEES OF CATAWBA ISLAND TOWNSHIP, IN FORMAL SESSION HEREBY APPROVE THESE PLANS AND CERTIFY THAT THE NECESSARY RIGHT-OF-WAY IS AVAILABLE

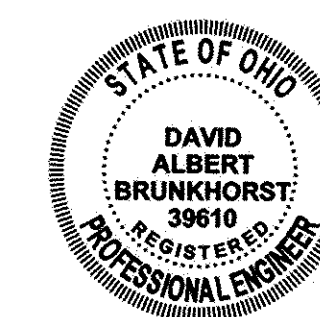

MATTHEW J. MONTOWSKI, TRUSTEE 2-28-12
DATE

GARY MORTUS, TRUSTEE DATE


WILLIAM J. ROFKAR, TRUSTEE 2/28/12
DATE

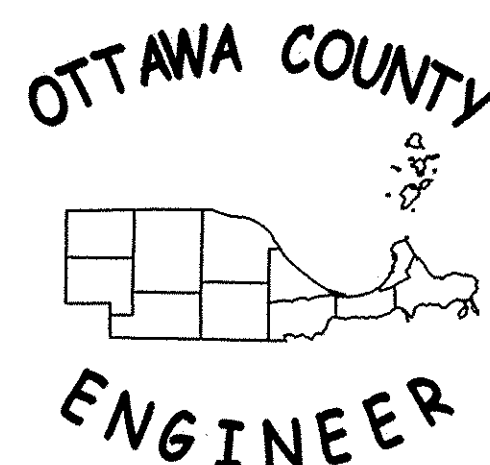
I HEREBY APPROVE THESE PLANS.


DAVID A. BRUNKHORST, P.E., R.S. 2/29/12
OTTAWA COUNTY ENGINEER DATE



2010 SPECIFICATIONS

THE STANDARD SPECIFICATIONS OF THE STATE OF OHIO, DEPARTMENT OF TRANSPORTATION, INCLUDING CHANGES AND SUPPLEMENTAL SPECIFICATIONS LISTED IN THE PROPOSAL, UNLESS STATED OTHERWISE, SHALL GOVERN THIS IMPROVEMENT.



OTTAWA COUNTY ENGINEER'S OFFICE - 315 MADISON STREET - PORT CLINTON, OHIO 43452

TITLE SHEET

CATAWBA TOWNSHIP
TRQ 10-015

GENERAL

SPECIFICATIONS

ALL WORK ASSOCIATED WITH THE PROJECT SHALL COMPLY WITH THE APPLICABLE SECTIONS OF THE OHIO DEPARTMENT OF TRANSPORTATION CONSTRUCTION AND MATERIAL SPECIFICATIONS DATED JANUARY 1, 2010.

UTILITY OWNERSHIP

THE FOLLOWING UTILITIES AND OWNERS ARE LOCATED WITHIN THE WORK LIMITS OF THE PROJECT:

OHIO EDISON
1910 W, MARKET STREET, BLDG. 1
AKRON, OH 44313
PHONE (330) 436-2764

COLUMBIA GAS OF OHIO
333 S. ERIE STREET
TOLEDO, OH 43602
(419) 252-8110

OTTAWA COUNTY ENGINEER
315 MADISON STREET, ROOM 106
PORT CLINTON, OH 43452
PHONE (419) 734-6777

REGIONAL WATER
315 MADISON STREET, ROOM 105
PORT CLINTON, OH 43452
PHONE (419) 734-6725

CONTINGENCY QUANTITIES

THE CONTRACTOR SHALL NOT ORDER MATERIALS OR PERFORM WORK FOR ITEMS DESIGNATED BY PLAN NOTE TO BE USED "AS DIRECTED BY THE ENGINEER" UNLESS AUTHORIZED BY THE ENGINEER. THE ACTUAL WORK LOCATIONS AND QUANTITIES USED FOR SUCH ITEMS SHALL BE INCORPORATED IN THE FINAL CHANGE ORDER GOVERNING THE COMPLETION OF THIS PROJECT.

ELEVATION DATUM

SITE BENCH MARKS AND ASSOCIATED DATUM FOR THE PROJECT SHALL BE PROVIDED BY THE OTTAWA COUNTY ENGINEER'S OFFICE.

WORK LIMITS

THE WORK LIMITS SHOWN IN THESE PLANS ARE FOR PHYSICAL CONSTRUCTION ONLY. INSTALLATION AND OPERATION OF ALL TEMPORARY TRAFFIC CONTROL AND TEMPORARY TRAFFIC CONTROL DEVICES REQUIRED FOR THE PROJECT SHALL BE PROVIDED BY THE CONTRACTOR WHETHER INSIDE OR OUTSIDE THESE WORK LIMITS.

PROTECTION AND RESTORATION OF PROPERTY

THE CONTRACTOR SHALL COMPLY WITH SECTION 107.10 OF THE SPECIFICATIONS WITH RESPECT TO PRESERVATION AND RESTORATION OF PROPERTY ADJACENT TO THE PROJECT INCLUDING ALL PHYSICAL ITEMS (I.E. MAILBOXES, UTILITIES, ETC.) IMPACTED DURING CONSTRUCTION.

STORM WATER POLLUTION PREVENTION PLAN

THE TOTAL ANTICIPATED DISTURBED EARTH AREA FOR THE PROJECT IS 0.79 ACRE. THEREFORE, A FORMAL POLLUTION PREVENTION PLAN IS NOT REQUIRED FOR THE PROJECT. HOWEVER, THIS DOES NOT RELIEVE THE CONTRACTOR OF THE RESPONSIBILITY TO INSTALL PROPER STORM WATER POLLUTION PREVENTION MEASURES AS REQUIRED BY ODOT SUPPLEMENTAL SPECIFICATION 832.

PAVEMENT

ITEM 202 - PAVEMENT REMOVED ASPHALT AS PER PLAN:

ALL EXISTING PAVEMENT SHALL BE REMOVED AS IDENTIFIED ON SHEET 5 OF 7. ALL ASPHALT AND UNDERLYING STONE AND SOIL MATERIAL SHALL BE REMOVED TO A MINIMUM DEPTH OF 12.5" BELOW PROPOSED GRADES SHOWN ON SHEET 6 OF 7. STONE AGGREGATE MATERIAL REMOVED AS PART OF THIS OPERATION MAY BE RE-USED ONLY AT THE DIRECTION OF THE ENGINEER. IF MATERIAL IS DEEMED UNUSABLE BY THE ENGINEER, THE CONTRACTOR SHALL BE RESPONSIBLE FOR REMOVAL FROM THE SITE AND PROPER DISPOSAL.

ITEM 304 - AGGREGATE BASE AS PER PLAN

A QUANTITY OF UP TO 190 CUBIC YARDS OF MATERIAL SHALL BE USED AT THE DIRECTION OF THE ENGINEER TO PERFORM SUBGRADE REPAIRS FOLLOWING THE PAVEMENT REMOVAL PROCESS. WORK ASSOCIATED WITH THIS ITEM SHALL INCLUDE REMOVAL AND PROPER DISPOSAL OF UNACCEPTABLE MATERIALS AS WELL AS PLACEMENT OF NEW MATERIAL AS REQUIRED BY CMS SECTION 304.

ITEM 451 - 6" REINFORCED CONCRETE PAVEMENT AS PER PLAN

THIS ITEM HAS BEEN INCLUDED IN THE PLANS TO ESTABLISH A UNIT PRICE FOR THE POTENTIAL INCLUSION OF A CONCRETE PAD AS LOCATED ON PAGE 6 OF 7. THE CONTRACTOR IS REQUIRED TO PROVIDE TO PROVIDE A COST FOR THIS ITEM. THE CONCRETE PAD WILL ONLY BE CONSTRUCTED IF DIRECTED BY THE TOWNSHIP. CONSTRUCTION OF THE CONCRETE PAVEMENT WILL RESULT IN A PROPORTIONAL REDUCTION IN MATERIALS SUPPLIED FOR THE PROPOSED ASPHALT PAVEMENT AS SHOWN IN THE PLANS.

MAINTENANCE OF TRAFFIC

MAINTENANCE OF TRAFFIC

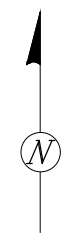
TRAFFIC SHALL BE MAINTAINED AT ALL TIMES DURING CONSTRUCTION TO ALLOW FOR TOWNSHIP MAINTENANCE PERSONNEL TO ACCESS APPROPRIATE FACILITIES WITHIN THE WORK SITE. COORDINATION OF THE CONTRACTOR AND TOWNSHIP MAINTENANCE SUPERINTENDENT THROUGHOUT THE DURATION OF THE PROJECT WILL BE REQUIRED.

THE CONTRACTOR SHALL PROVIDE, ERECT, MAINTAIN AND SUBSEQUENTLY REMOVE ALL SIGNS, BARRICADES, GATES, AND LIGHTS REQUIRED TO RESTRICT TRAFFIC FROM ENTERING CONSTRUCTION AREAS.

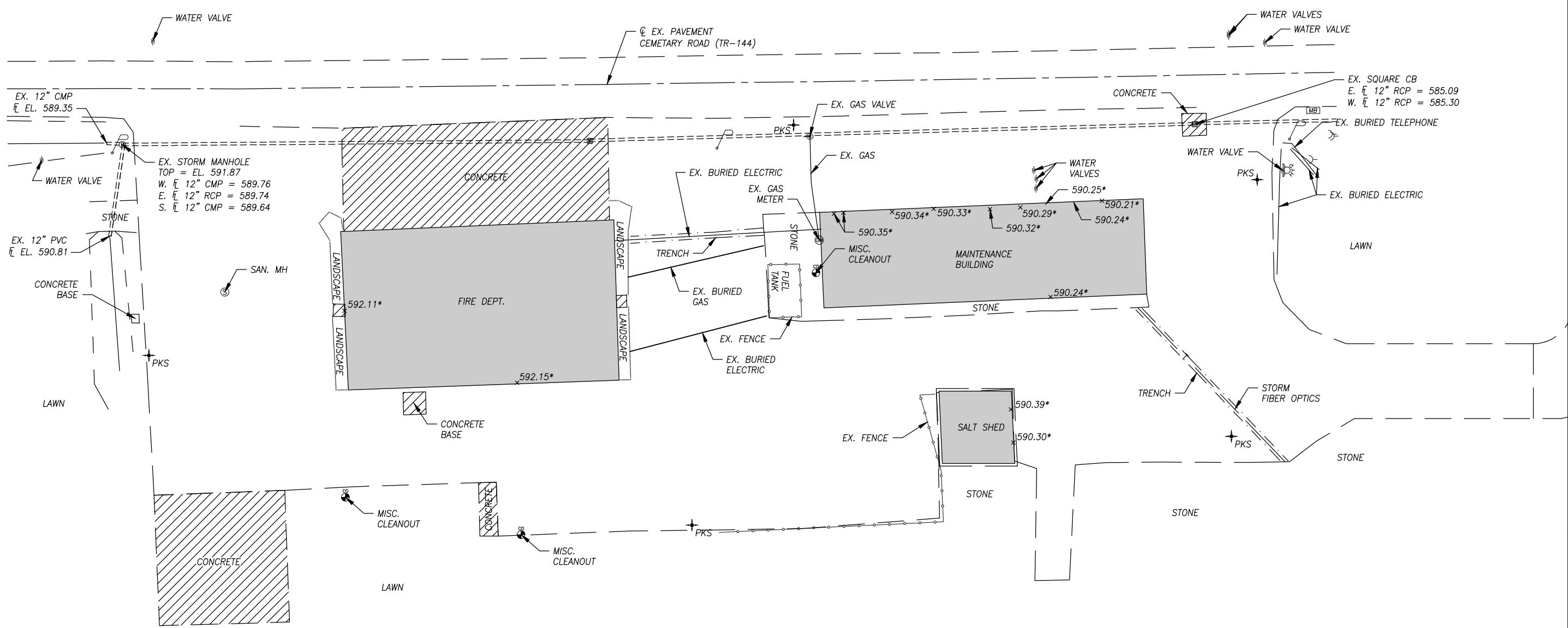
ALL WORK AND TRAFFIC CONTROL DEVICES SHALL BE PROVIDED AS DIRECTED BY THE ENGINEER.

GENERAL NOTES

CATAWBA TOWNSHIP
TRQ 10-015



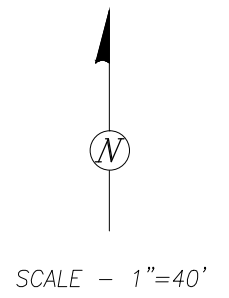
SCALE - 1"=40'



LEGEND

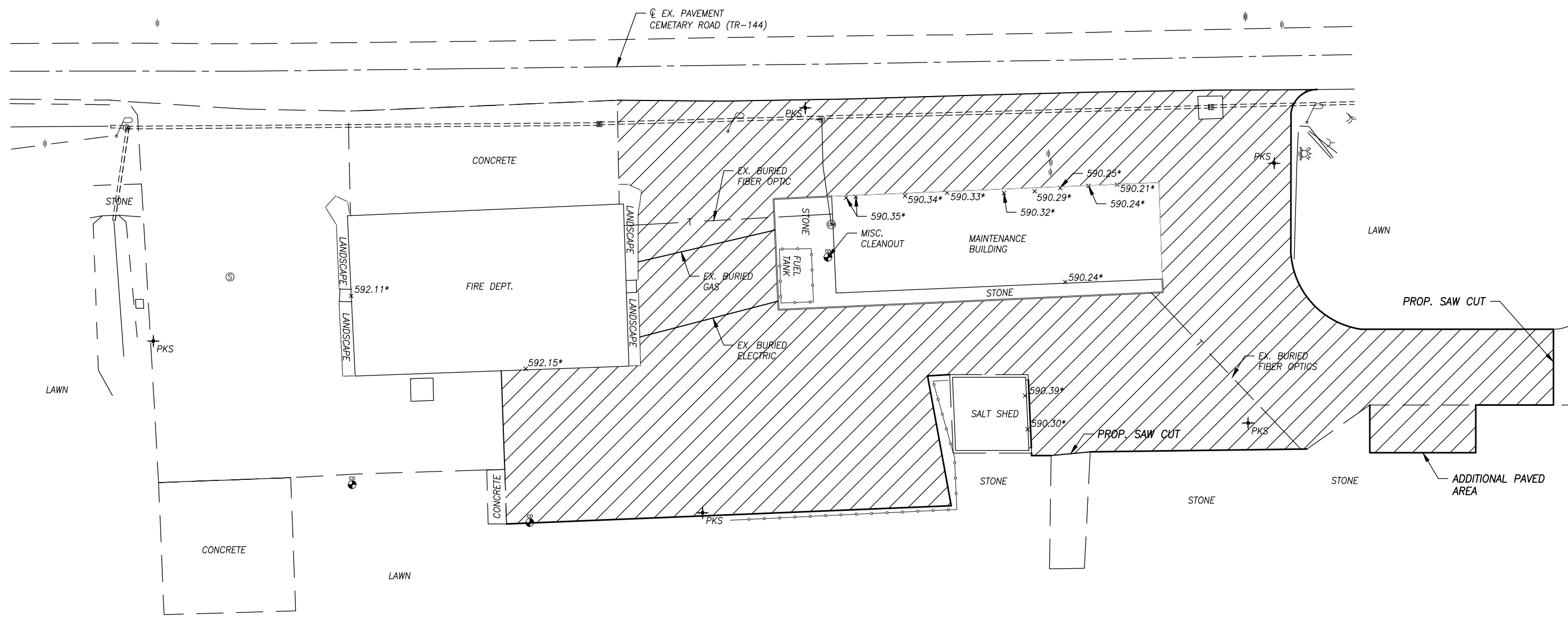
- x xxx.xx* = EXISTING FINISHED FLOOR ELEVATION
- = CONCRETE PAVING AREAS TO REMAIN

CALCULATED
JFM
CHECKED
RPL

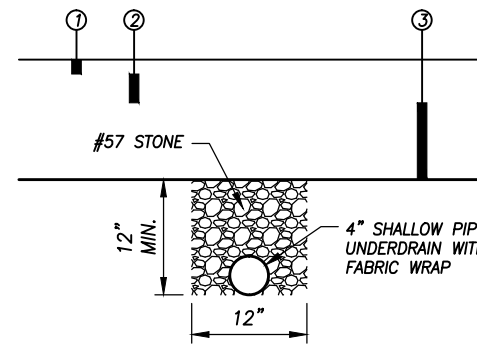


CATAWBA ISLAND TOWNSHIP HALL PAVING
PAVING PLAN

CATAWBA TOWNSHIP
TRQ 10-015



LEGEND
 xxxx.xx* = EXISTING FINISHED FLOOR ELEVATION
 [Hatched Box] = AREAS TO BE PAVED

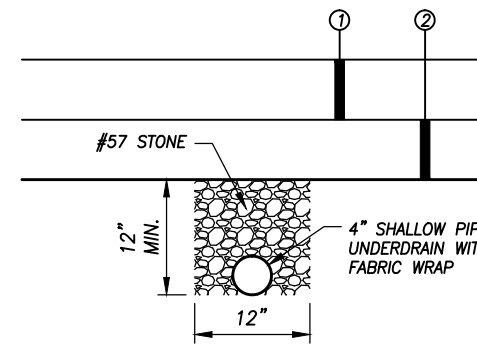


ASPHALT PAVEMENT LEGEND

- ① 1 1/2" - ITEM 448 SURFACE, TYPE 1
- ② 3" - ITEM 448 INTERMEDIATE, TYPE 2
- ③ 8" - ITEM 304 AGGREGATE BASE

NOTE:

1. UNDERDRAINS SHALL BE INSTALLED WITH A MINIMUM 1.00% SLOPE TO ASSURE POSITIVE DRAINAGE.
2. CONTRACTOR SHALL SUPPLY ALL REQUIRED FITTINGS FOR UNDERDRAINS.
3. CONTRACTOR SHALL PROVIDE TAPS INTO EXISTING CATCH BASINS AS SHOWN.

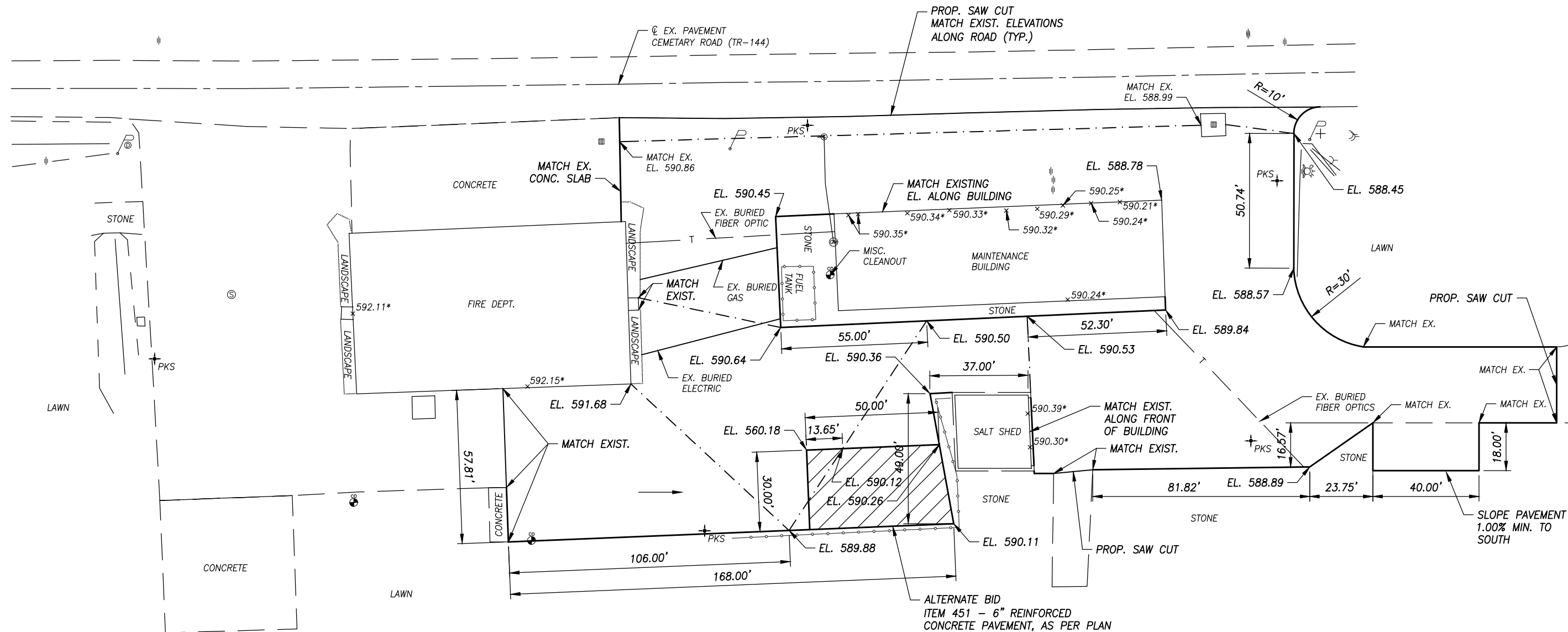
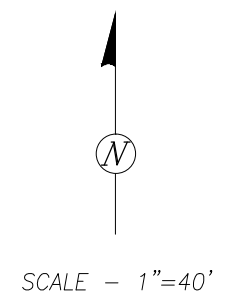


CONCRETE PAVEMENT LEGEND

- ① 6" - ITEM 451 6" REINFORCED CONCRETE PAVEMENT
- ② 6" - ITEM 304 AGGREGATE BASE

NOTE:

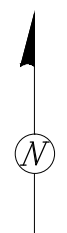
1. UNDERDRAINS SHALL BE INSTALLED WITH A MINIMUM 1.00% SLOPE TO ASSURE POSITIVE DRAINAGE.
2. CONTRACTOR SHALL SUPPLY ALL REQUIRED FITTINGS FOR UNDERDRAINS.
3. CONTRACTOR SHALL PROVIDE TAPS INTO EXISTING CATCH BASINS AS SHOWN.



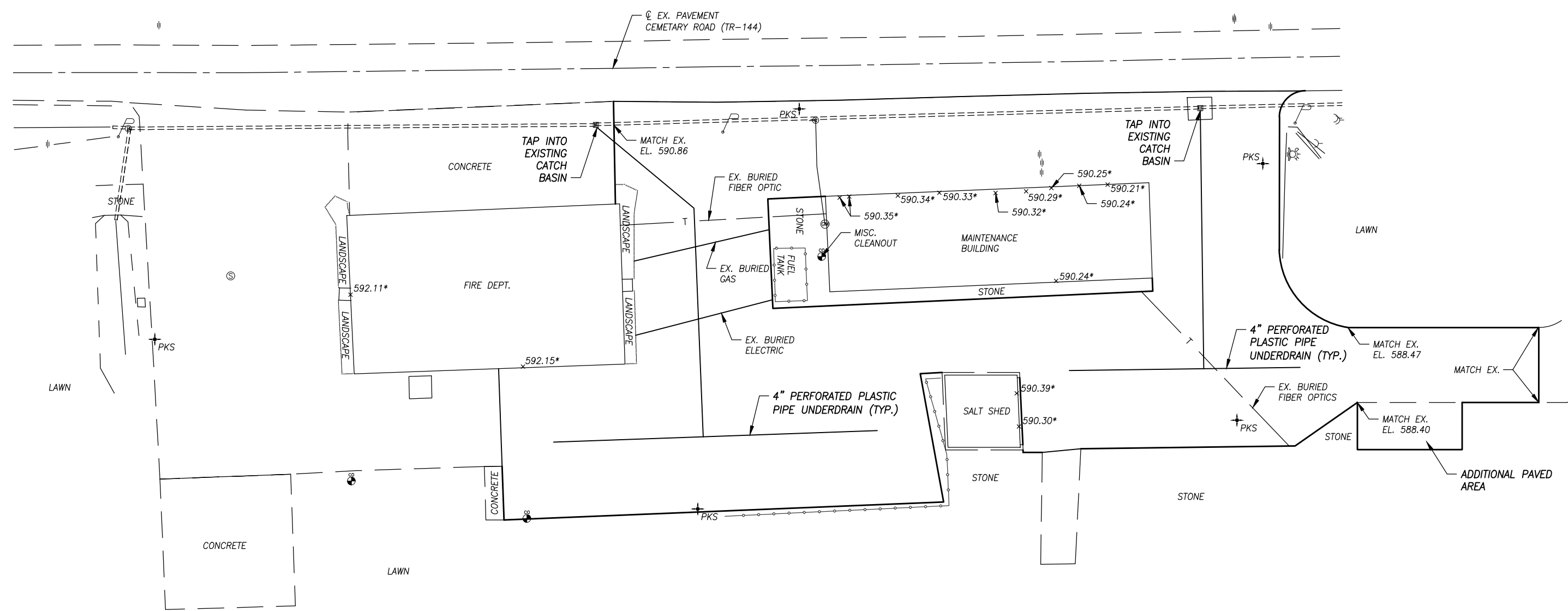
LEGEND

- x.xxx.xx* = EXISTING FINISHED FLOOR ELEVATION
- . - = PROPOSED PAVEMENT GRADE BREAK

CALCULATED
JFM
CHECKED
RPL



SCALE - 1"=40'



LEGEND

xXXX.XX* = EXISTING FINISHED FLOOR ELEVATION

NOTE:

SEE SHEET 6 OF 7 FOR TYPICAL UNEDRAIN INSTALLATION DETAIL.

CATAWBA ISLAND TOWNSHIP HALL PAVING
DRAINAGE DETAILS

CATAWBA TOWNSHIP
TRQ 10-015