

2014 BITUMINOUS SURFACE TREATMENT OF VARIOUS BENTON TOWNSHIP ROADS LOCATED IN SECTIONS 28, 33 & 34, T8N, R14E, BENTON TOWNSHIP, OTTAWA COUNTY, OHIO

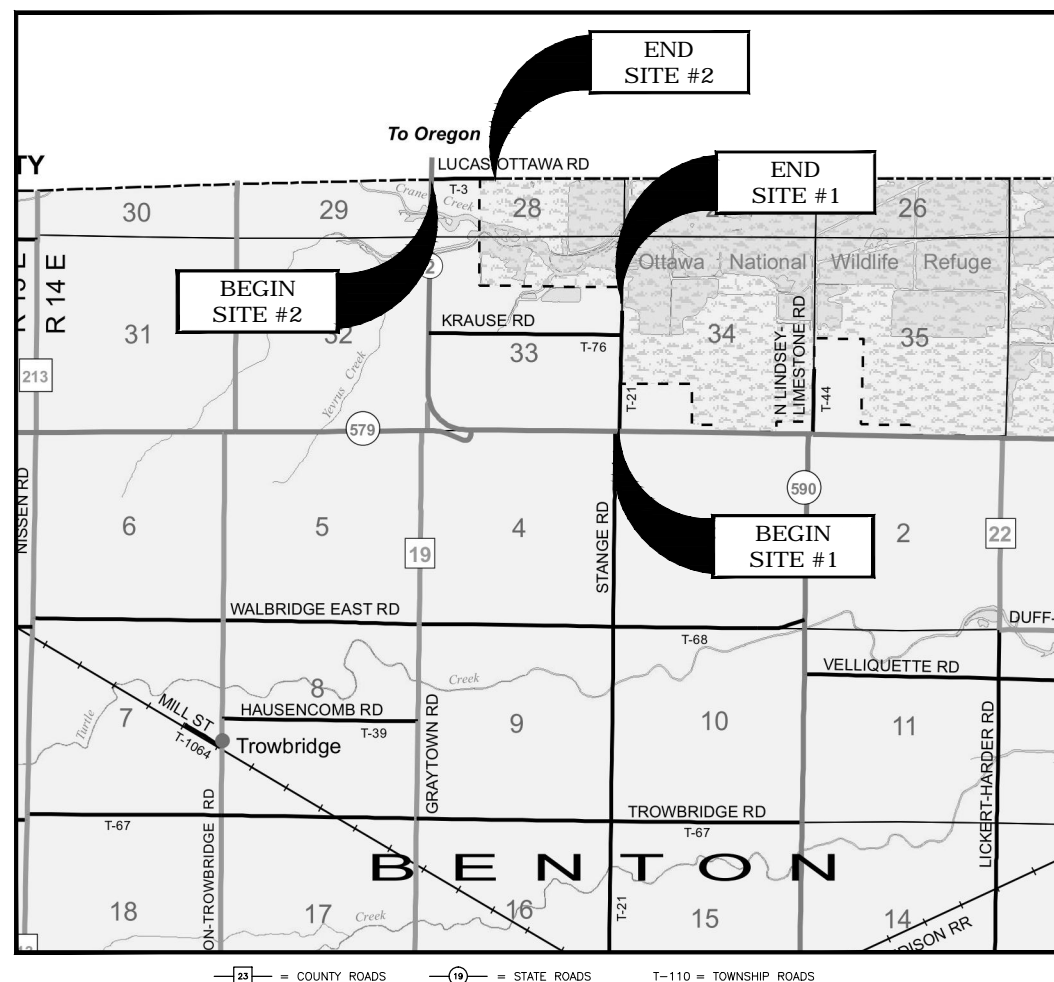
~2014~

PROJECT DESCRIPTION

PLACING OF COLD MIX ASPHALT OVERLAY ONTO STANGE ROAD, T.R. 21, FROM S.R. 2 NORTH 3221 LF TO TERMINUS AT THE WILDLIFE ENTRANCE. PROJECT ALSO INCLUDES AN ADDITIONAL OPTION TO DOUBLE CHIP SEAL LUCAS-OTTAWA ROAD, T.R. 3, FROM S.R. 2 EAST 1727 LF TO THE END OF THE CULDESAC.

ENVIRONMENTAL COMMITMENTS

1. ALL WORK SHALL BE PERFORMED WITHIN THE EXISTING RIGHT-OF-WAY.
2. IF ANY ANIMALS, SNAKE, TURTLE OR BIRD IS FOUND ON THE ROAD, THEN THE CONTRACTOR SHOULD AWAIT UNTIL THE SPECIES HAS MOVED OFF OF THE PROJECT BEFORE THE RESURFACING CAN CONTINUE.
3. TREE CUTTING IS NOT INCLUDED IN THIS PROJECT, SHOULD TREES NEED TO BE CUT BETWEEN APRIL 1 AND SEPTEMBER 31, PRIOR APPROVAL MUST BE GIVEN BY THE ODOT DISTRICT 2 ENVIRONMENTAL COORDINATOR PRIOR TO THE TREE CUTTING.
4. THE CONTRACTOR SHALL TAKE ALL PRECAUTIONS TO PREVENT ANY AND ALL MATERIAL FROM GOING OFF THE EDGE OF THE EXISTING ROADWAY SURFACE DURING ALL CONSTRUCTION OPERATIONS. THE CONTRACTOR SHALL IMMEDIATELY REMOVE ANY MATERIAL THAT FALLS INTO THE ROADSIDE DITCHES, STREAM, WETLANDS, OR OTHER WATERS THROUGH NON-MECHANICAL MEANS. UNDER NO CIRCUMSTANCES SHALL THE CONTRACTOR WORK IN OR STORE EQUIPMENT AND/OR MATERIALS IN ANY WETLANDS, STREAMS, OR OTHER WATERS. NO WORK IS PERMITTED BELOW THE ORDINARY HIGH WATER MARK (OHWM) OF ANY STREAM.



INDEX OF SHEETS

TITLE SHEET _____ 1
 PLAN SHEETS & TYPICAL SECTIONS _____ 2-7

2012 SPECIFICATIONS

THE STANDARD SPECIFICATIONS OF THE STATE OF OHIO, DEPARTMENT OF TRANSPORTATION, INCLUDING CHANGES AND SUPPLEMENTAL SPECIFICATIONS LISTED IN THE PROPOSAL, UNLESS STATED OTHERWISE, SHALL GOVERN THIS IMPROVEMENT.

APPROVAL

I HEREBY APPROVE THESE PLANS.

 DAVID A. BRUNKHORST, P.E., R.S.
 OTTAWA COUNTY ENGINEER

 DATE

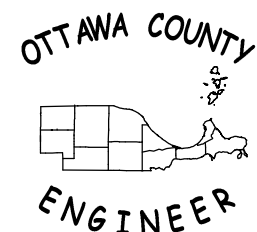


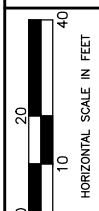
UNDERGROUND UTILITIES



2 WORKING DAYS
 BEFORE YOU DIG

CALL 1-800-362-2764 (TOLL FREE)
 OHIO UTILITIES PROTECTION SERVICE
 NON-MEMBERS MUST BE CALLED DIRECTLY



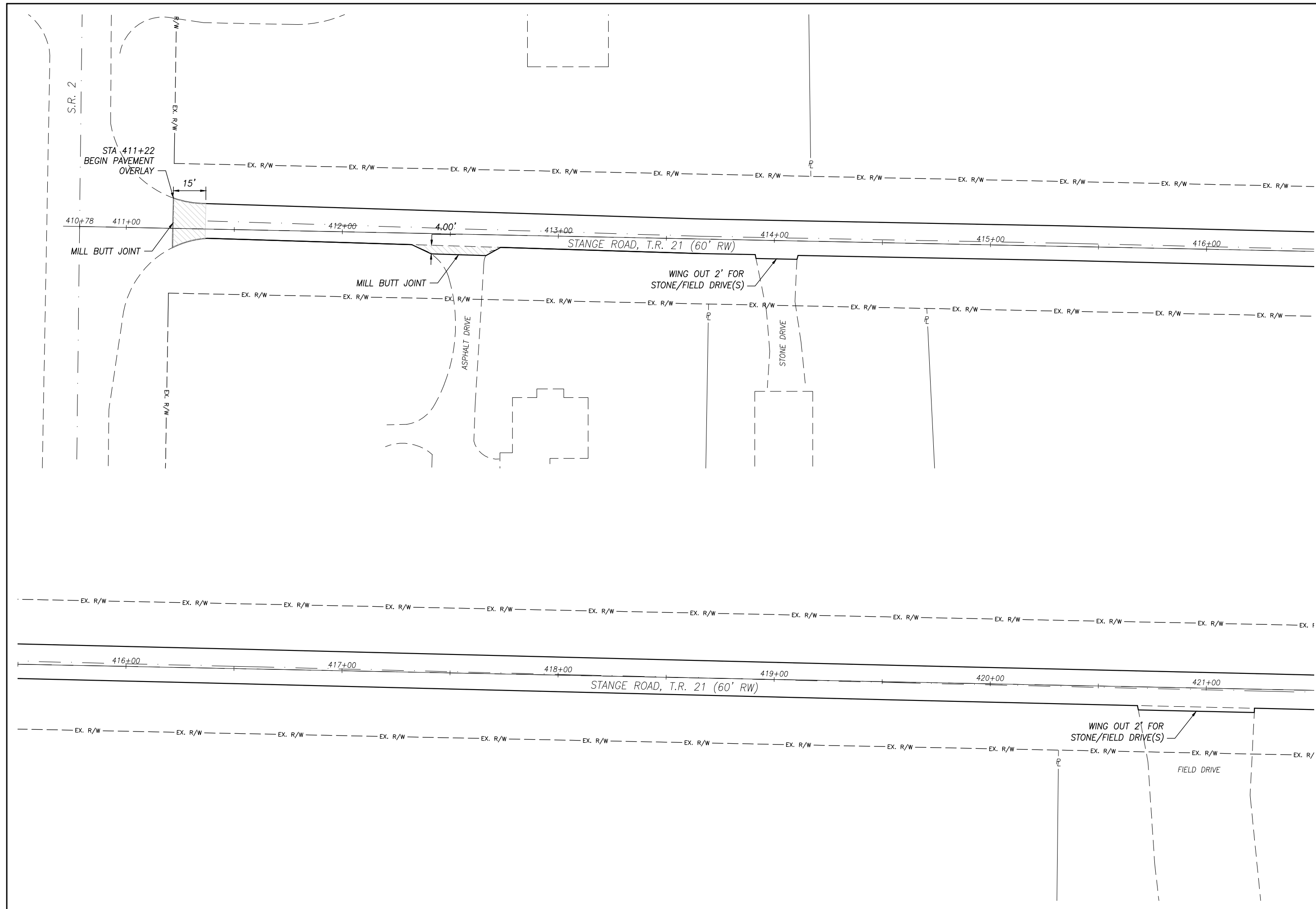


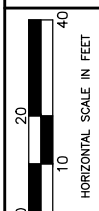
CALCULATED
CRM
CHECKED
RPL

PLAN VIEW - T.R. 21
STA. 410+78 TO 421+00

PROJ. #14-011

2
7



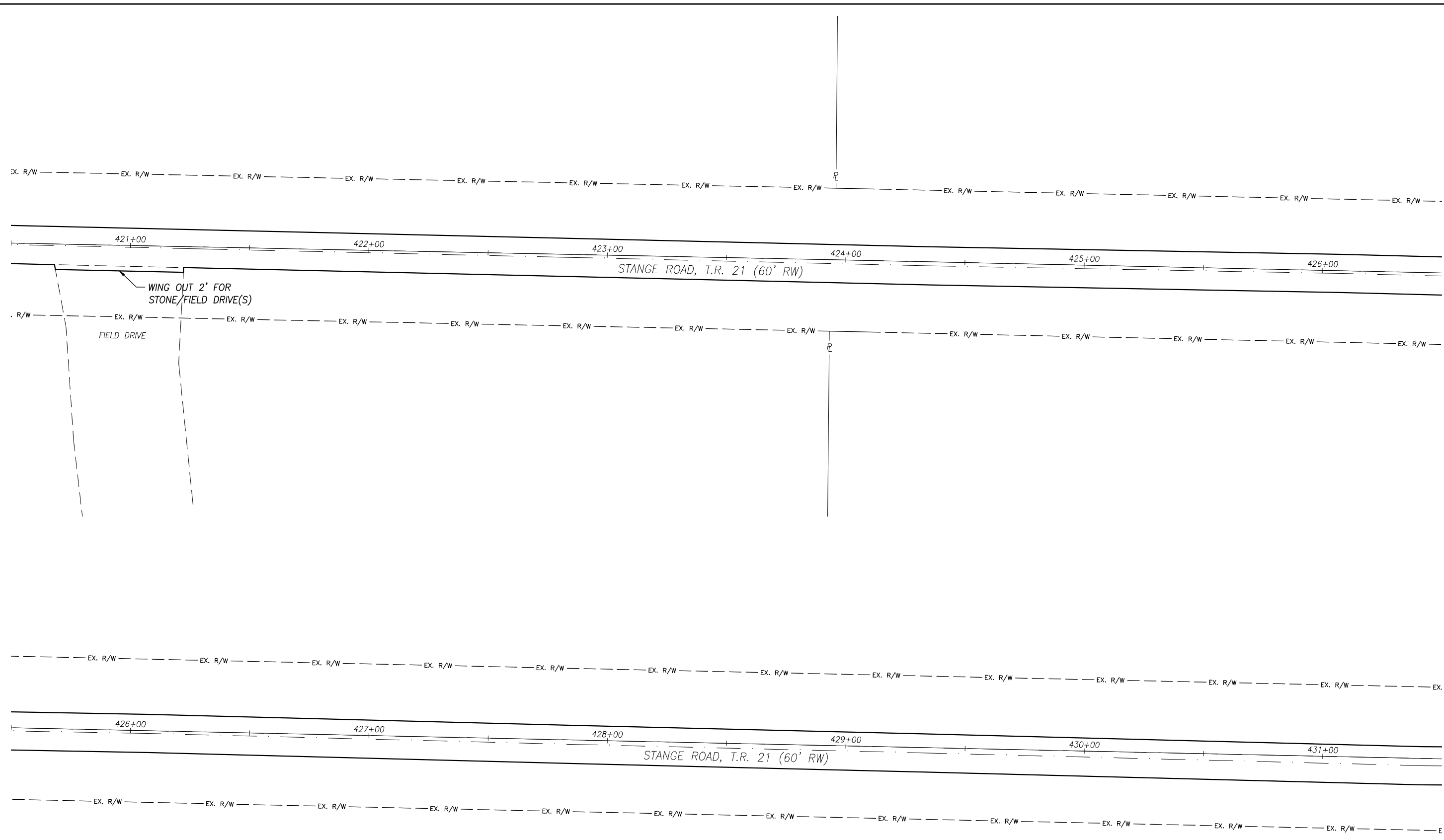


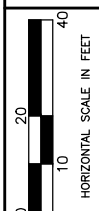
CALCULATED
CRM
CHECKED
RPL

PLAN VIEW - T.R. 21
STA. 421+00 TO 431+00

PROJ. #14-011

3
7



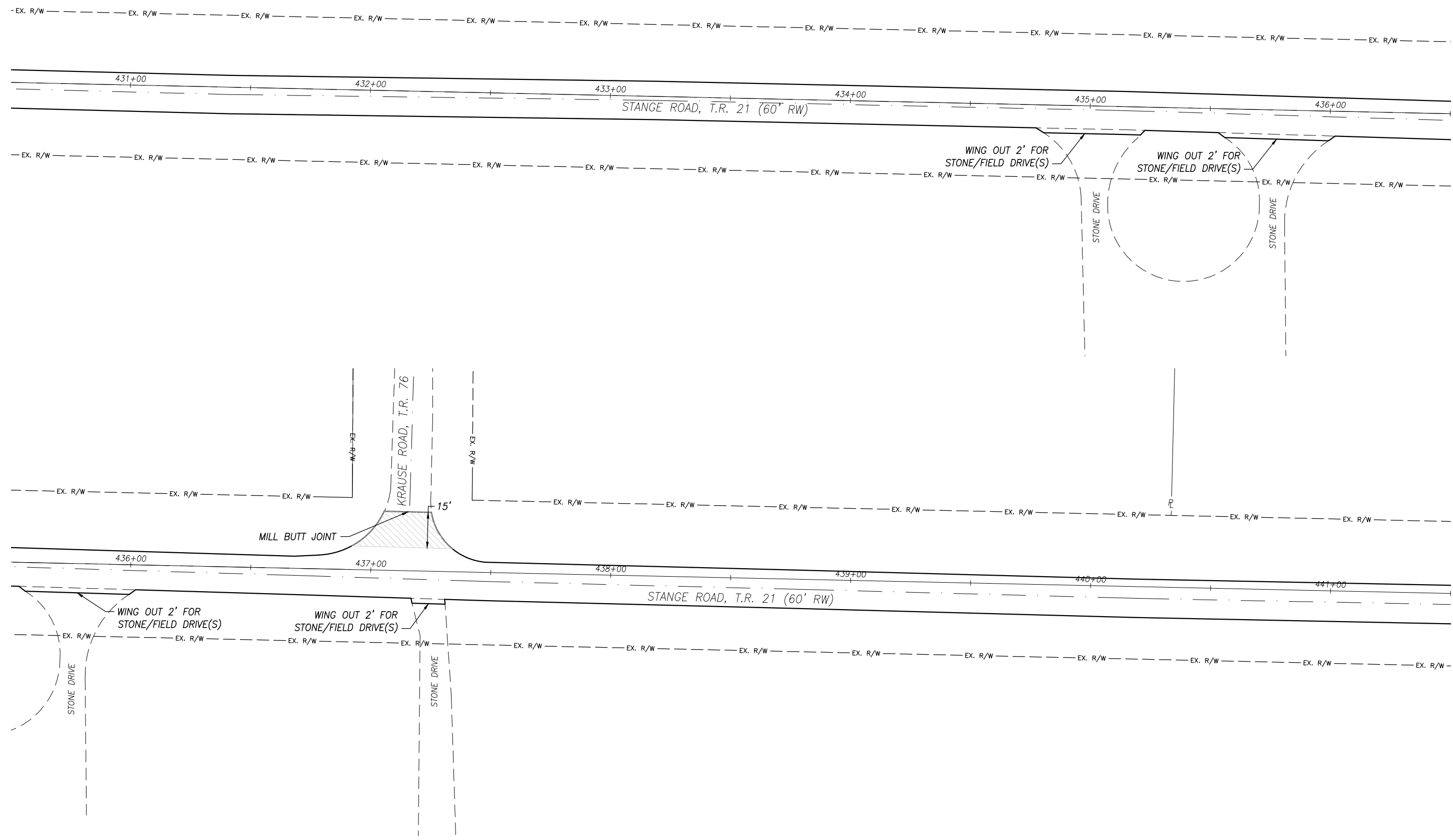


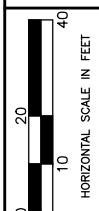
CALCULATED
CRM
CHECKED
RPL

PLAN VIEW - T.R. 21
STA. 410+78 TO 421+00

PROJ. #14-011

4
7



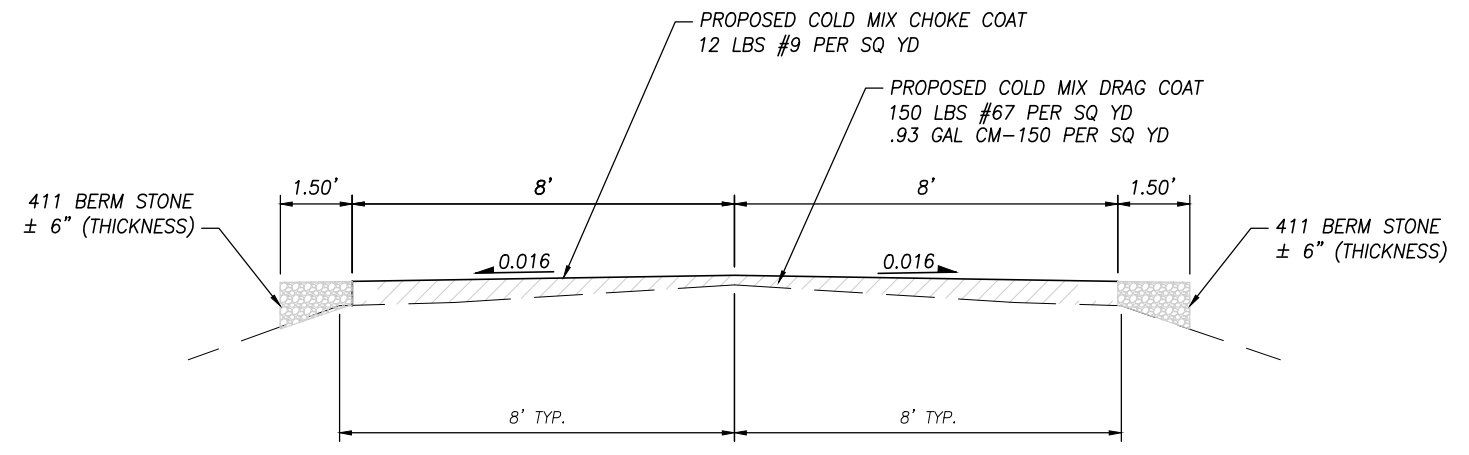
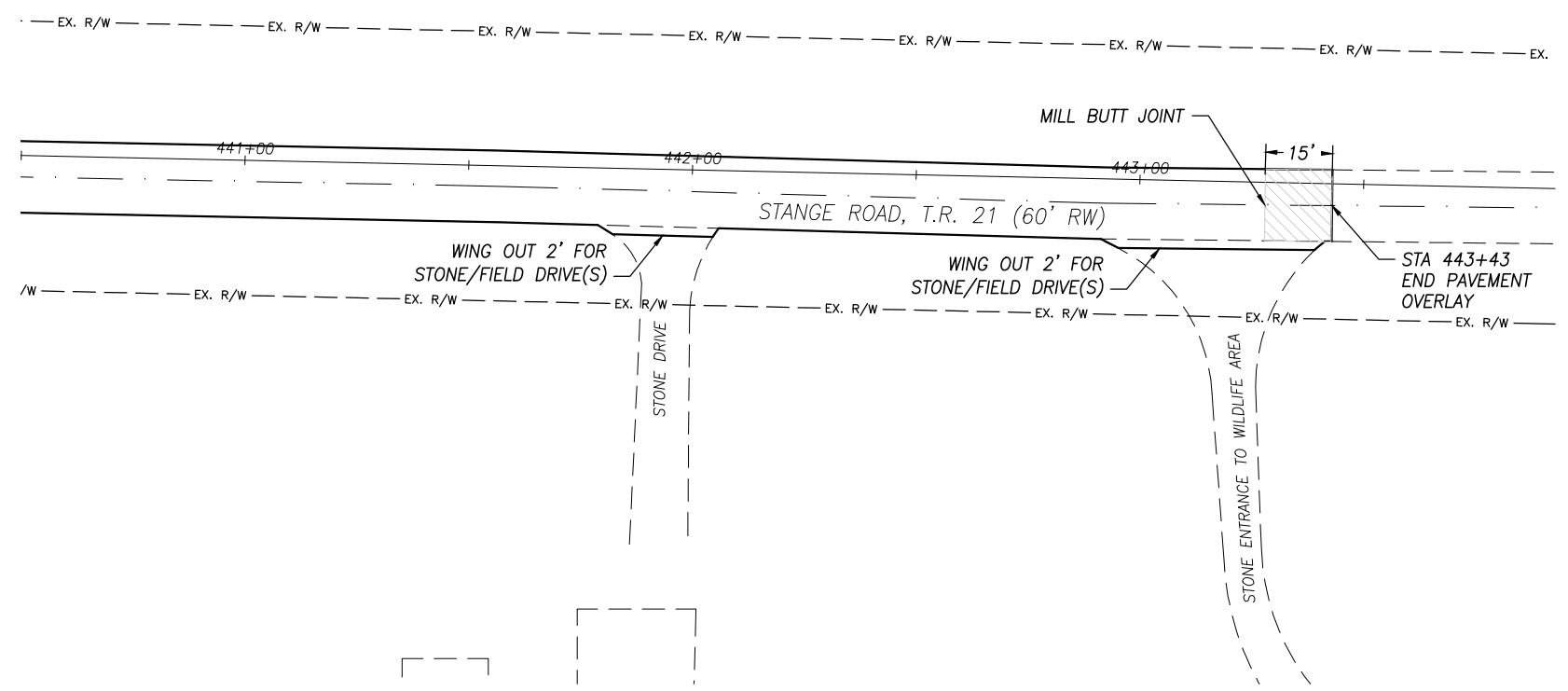


CALCULATED
CRM
CHECKED
RPL

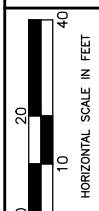
PLAN VIEW - T.R. 21
STA. 410+78 TO 421+00

PROJ. #14-011

5
7



PROPOSED TYPICAL SECTION
STANGE ROAD STA 411+22 TO STA 443+43

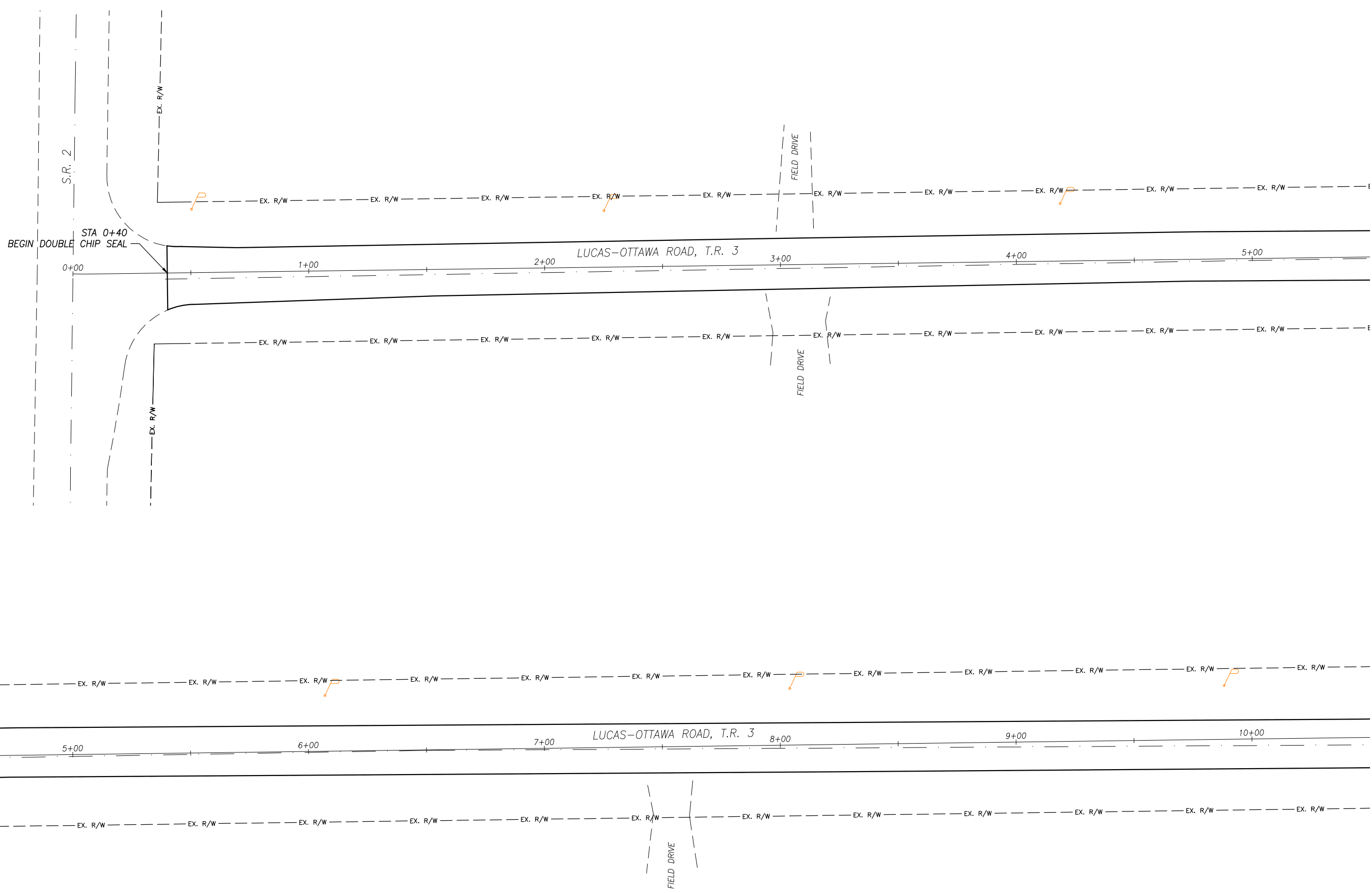


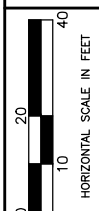
CALCULATED
CRM
CHECKED
RPL

PLAN VIEW - T.R. 3
STA. 0+40 TO 10+00

PROJ. #14-011

0
7



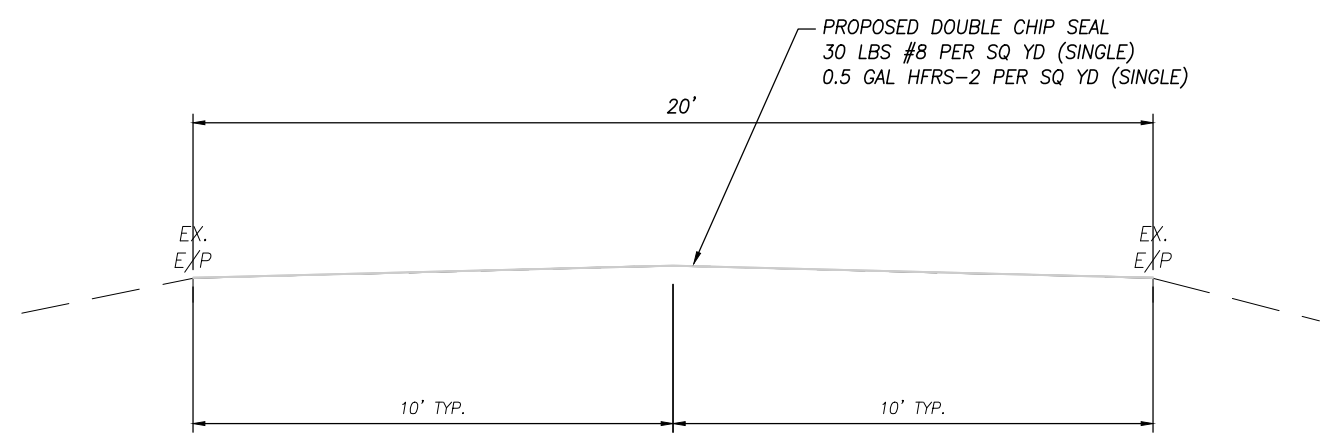
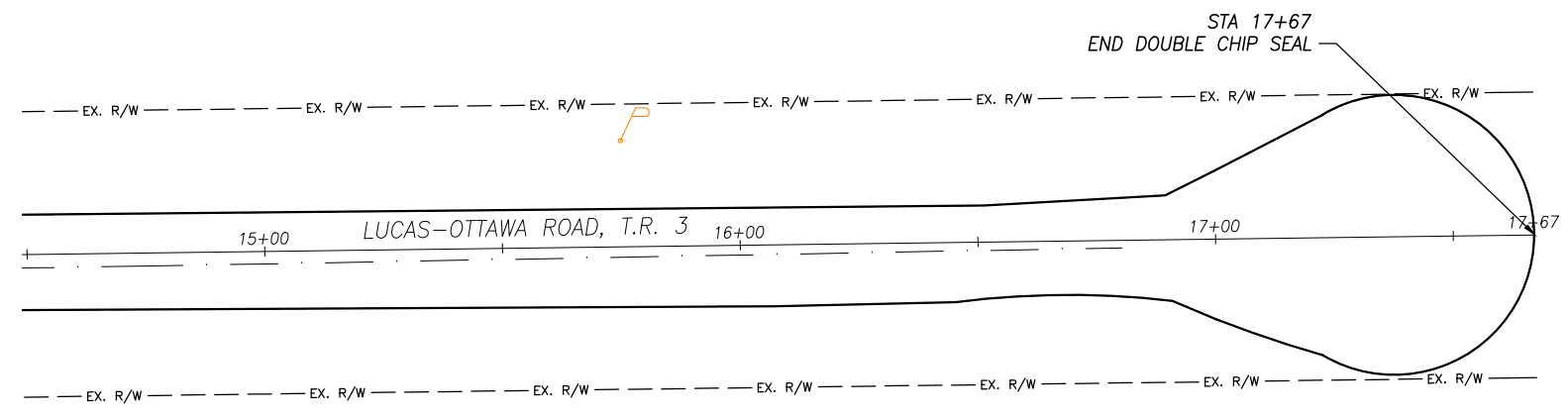
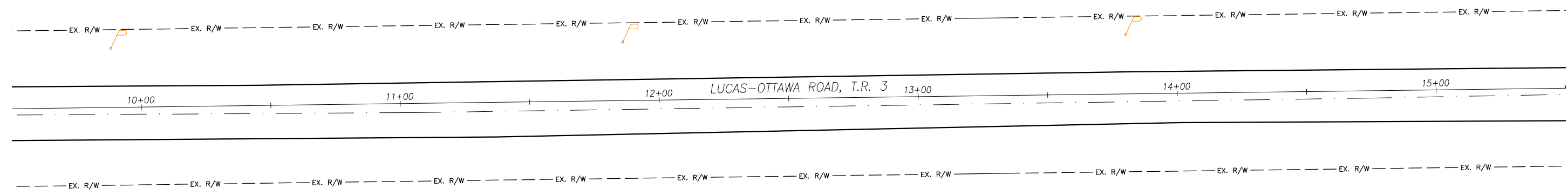


CALCULATED
CRM
CHECKED
RPL

PLAN VIEW - T.R. 3
STA. 10+00 TO 17+67

PROJ. #14-011

7
7



PROPOSED TYPICAL SECTION
LUCAS-OTTAWA ROAD STA 0+40 TO STA 17+67