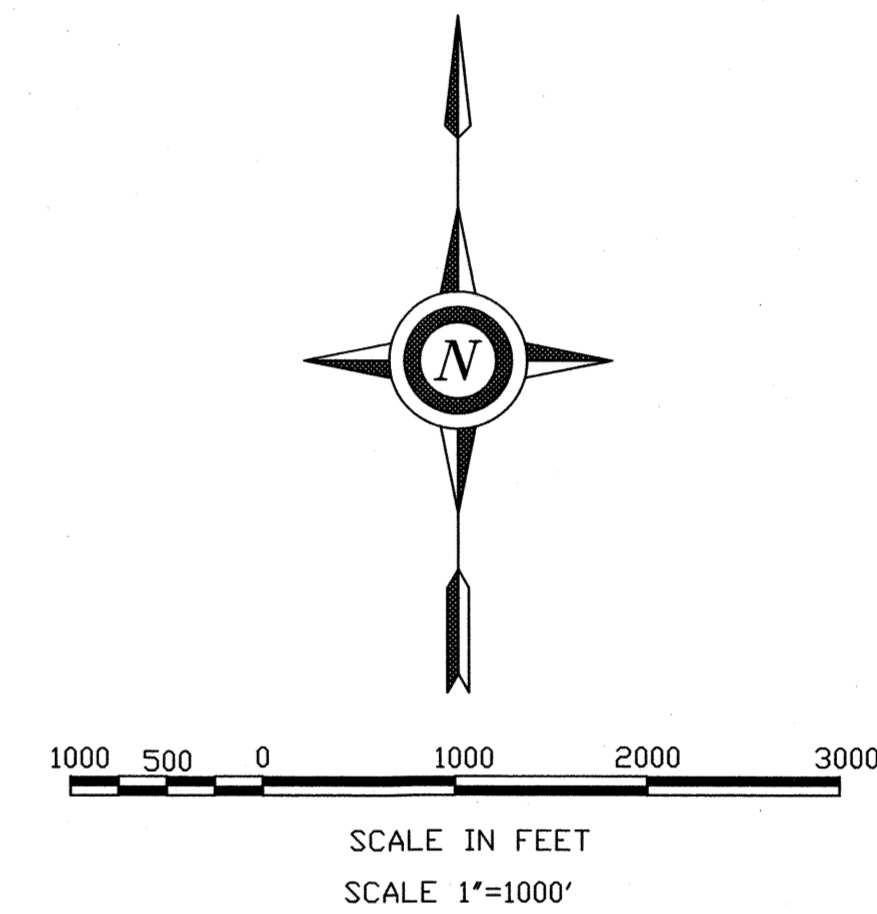
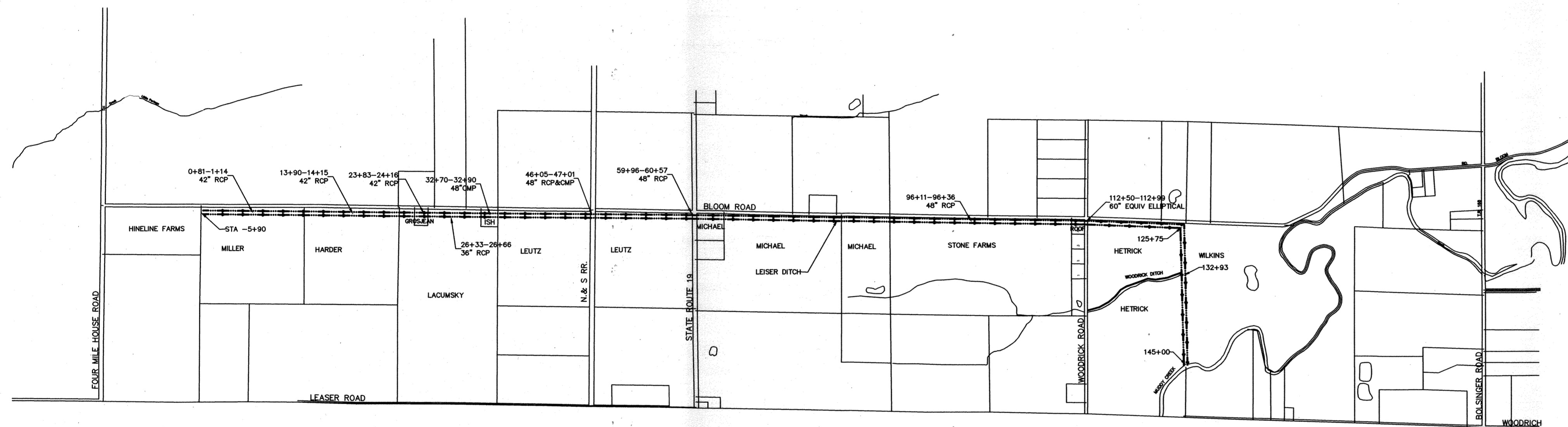


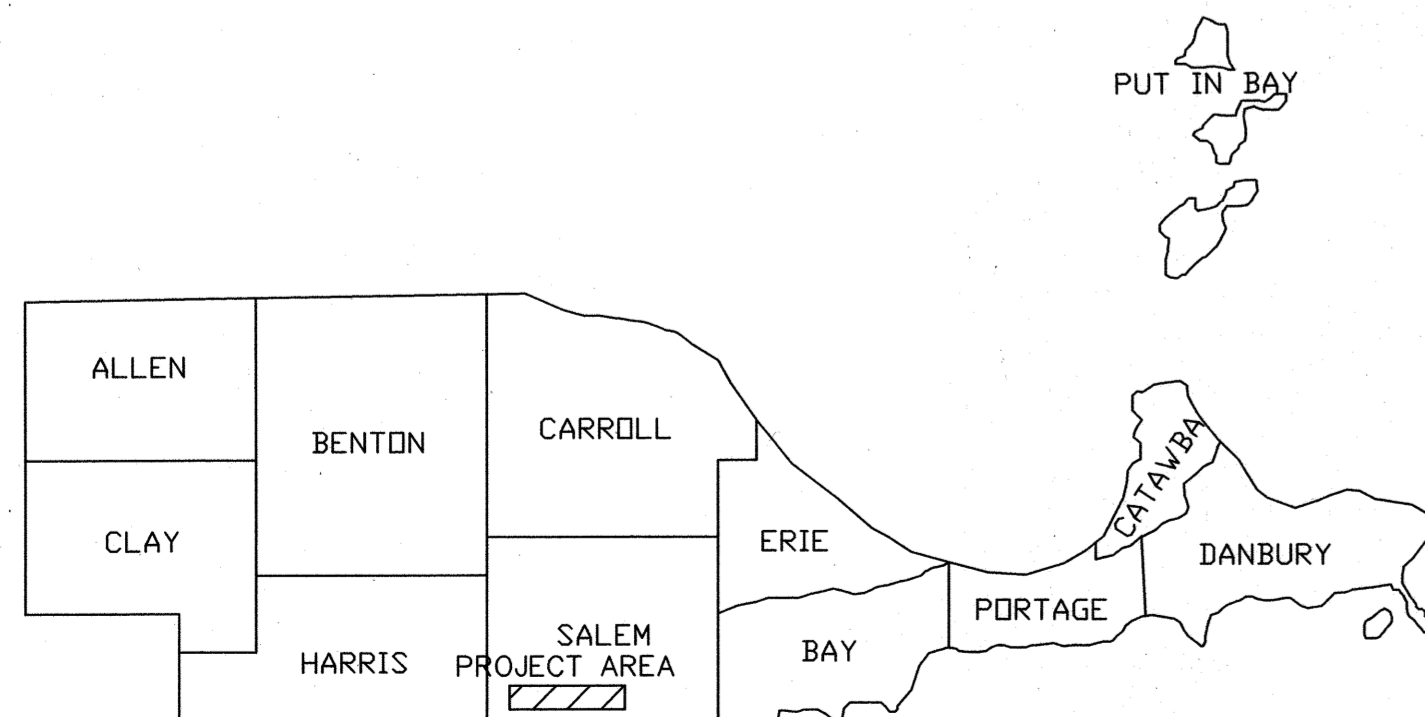
LEISER DITCH

MAINTENANCE PROJECT 2018

SALEM TOWNSHIP SECTIONS 19, 20, 21 & 22



- TBM Top of south end of 12" steel pipe on north bank of ditch on south side of Bloom Road where ditch turns south STA 125+75 Elev. 577.03
- TBM Chiseled + on west end of elliptical RCP in southwest corner of intersection of Bloom and Woodrick Roads. Elev. 581.80
- TBM Chiseled + on east end of 48" RCP culvert on south side of Bloom Road STA 96+36 elev. 582.74
- TBM Chiseled + on west end of 48" RCP in the southwest corner of the intersection of SR 19 and Bloom Road Elev. 585.24
- TBM Top of fourth rib of 48" CMP on east side of the N&S RR on south side of Bloom Road STA 47+01 Elev. 586.87
- TBM Top of chiseled + on west end of 48" RCP on west side of N&S RR on south side of Bloom Road STA 46+05 Elev. 587.17
- TBM RR spike in north side of power pole on south side of Bloom Road near STA 14+00 set in 1973 from the Leiser Ditch Plan Elev. 591.00



NOTE TO EXCAVATOR

Excavator must notify all utilities at least 48 hours and not more than 10 days prior to the planned commencement of excavation.

1. OUPS member utilities will be contacted by calling oups (1-800-362-2764 or 811)
2. Each Limited Basis Participant and the Ohio Oil and Gas Producers Underground Protection Service (1-800-925-0988) will be contacted by the excavator using the telephone number provided.

2 WORKING DAYS - 2 CALLS
BEFORE YOU DIG


CALL TOLL FREE **800-362-2764** or **811**

OHIO UTILITIES PROTECTION SERVICE

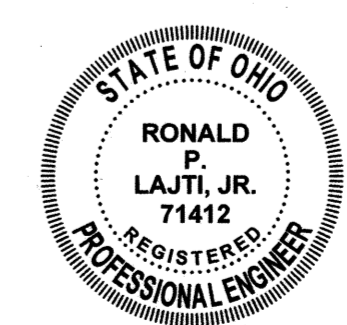

CALL TOLL FREE **800-925-0988**

Ohio Oil and Gas Producers Underground Protection Service (OUPS)

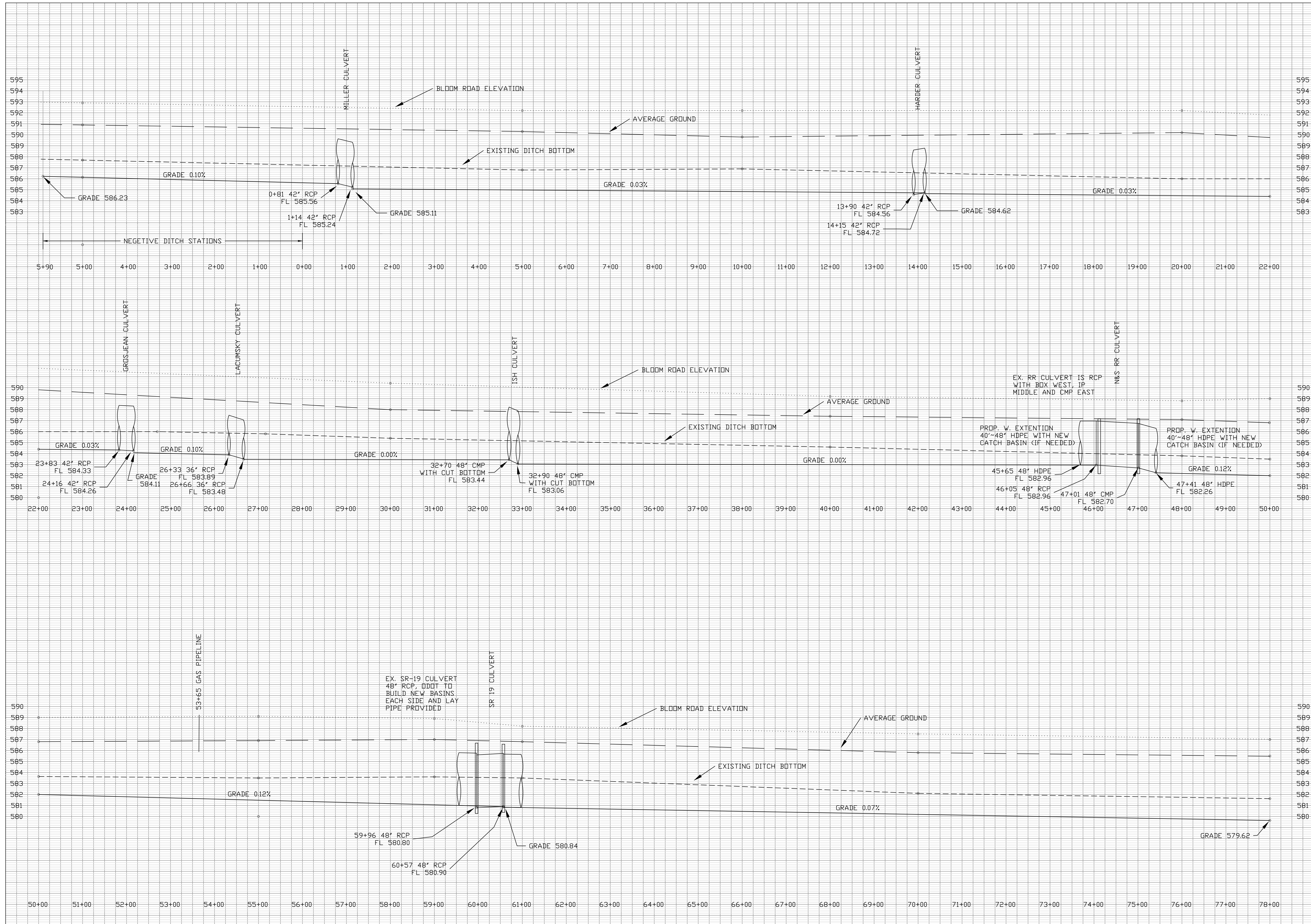
I HEREBY APPROVE THESE PLANS.


RONALD P. LAJTI, JR., P.E., P.S.
 OTTAWA COUNTY ENGINEER

5/21/18
 DATE

LEISER DITCH	OTTAWA SOIL & WATER CONSERVATION DISTRICT
Designed <u>MICHAEL GARGAC</u> Drawn <u>MICHAEL GARGAC</u> Redlined _____ Checked _____	DATE <u>9/2017</u> Approved _____ Title _____ Construction Approved _____ Title _____
CAD FILE I.D. _____ DRAWING NUMBER _____ Sheet <u>1</u> of <u>6</u>	

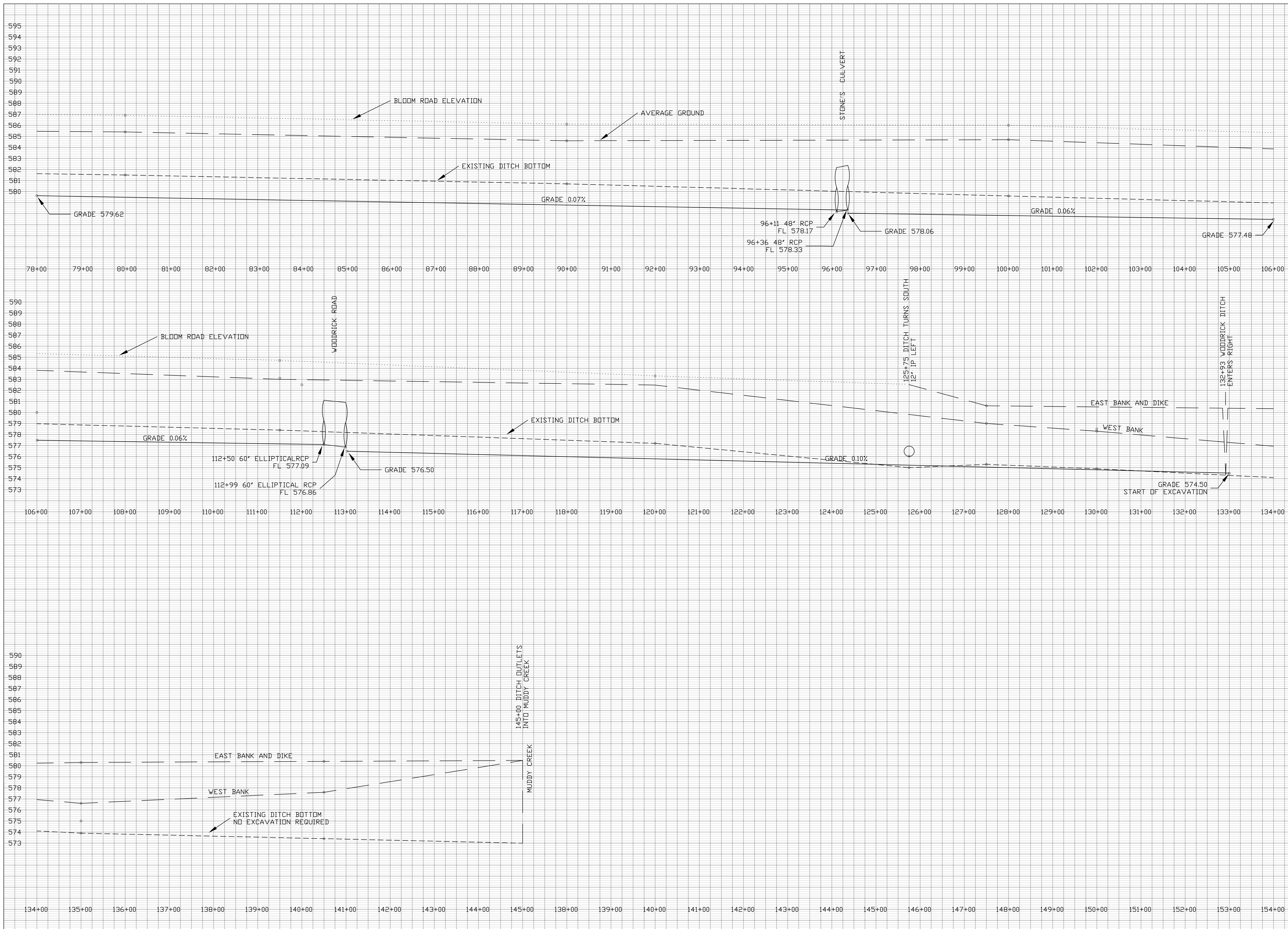


DATE	9/20/17
Approved	
Title	
Const. Approved	
Title	
DATE	9/20/17
Designed	MWE GARGAL
Drawn	MWE GARGAL
Traced	
Checked	

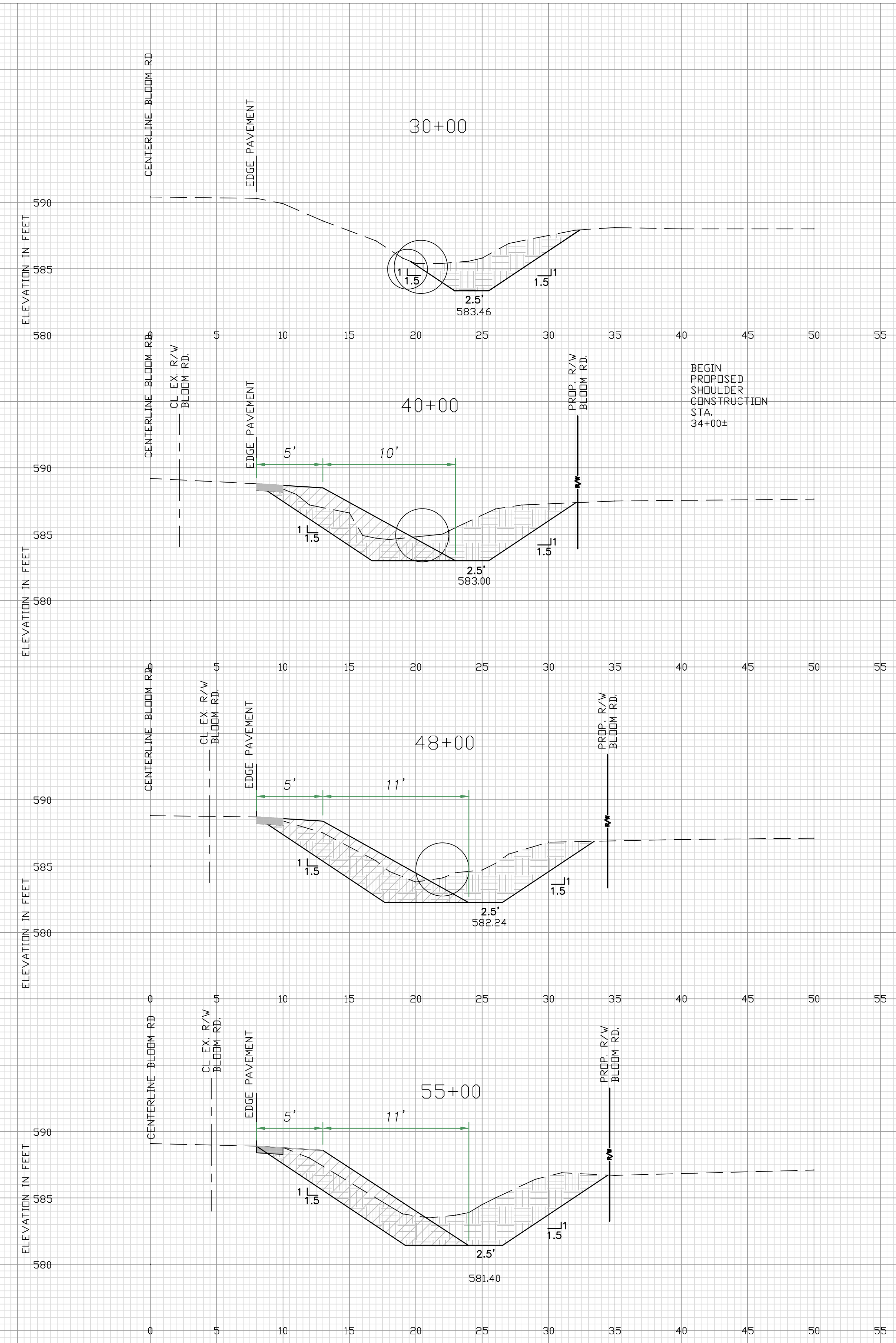
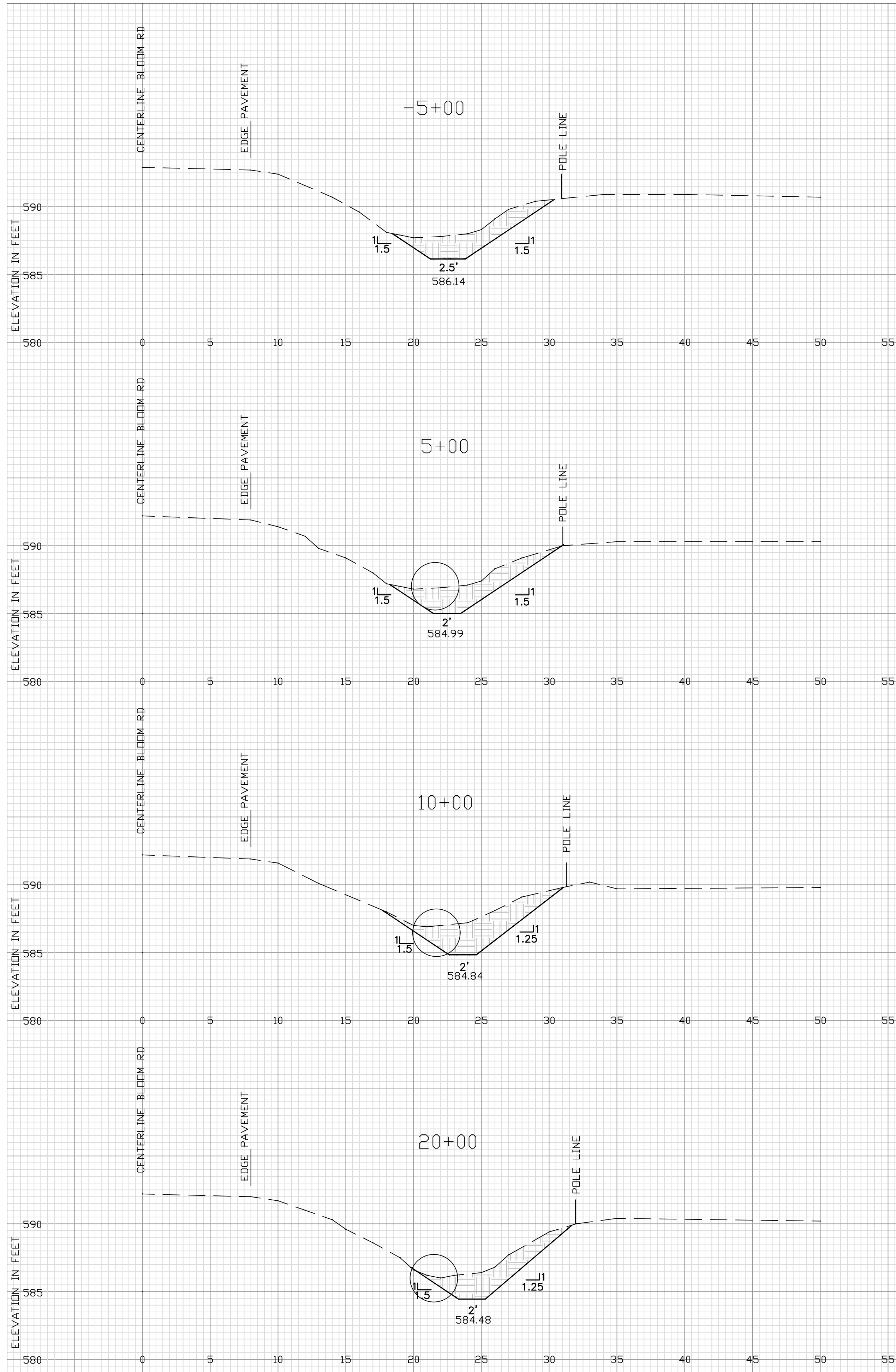
LEISLER DITCH

OTTAWA SOIL & WATER CONSERVATION DISTRICT

CAD FILE I.D. 9/12/2017 4:59 PM Leisler Profile Fig 1.dwg
DRAWING NUMBER
Sheet 2 of 6



DATE	DATE	DATE
Approved	9/2/07	9/2/07
Title	Designed	Checked
Const. Approved	Drawn	Traced
Title	Checked	
<h1>LEISER DITCH</h1> <h2>OTTAWA SOIL & WATER CONSERVATION DISTRICT</h2>		
CAD FILE I.D. 5/3/2008 9:58 AM Leiser Profile Pg 2.dwg mgarac		
DRAWING NUMBER		
Sheet 3 of 6		



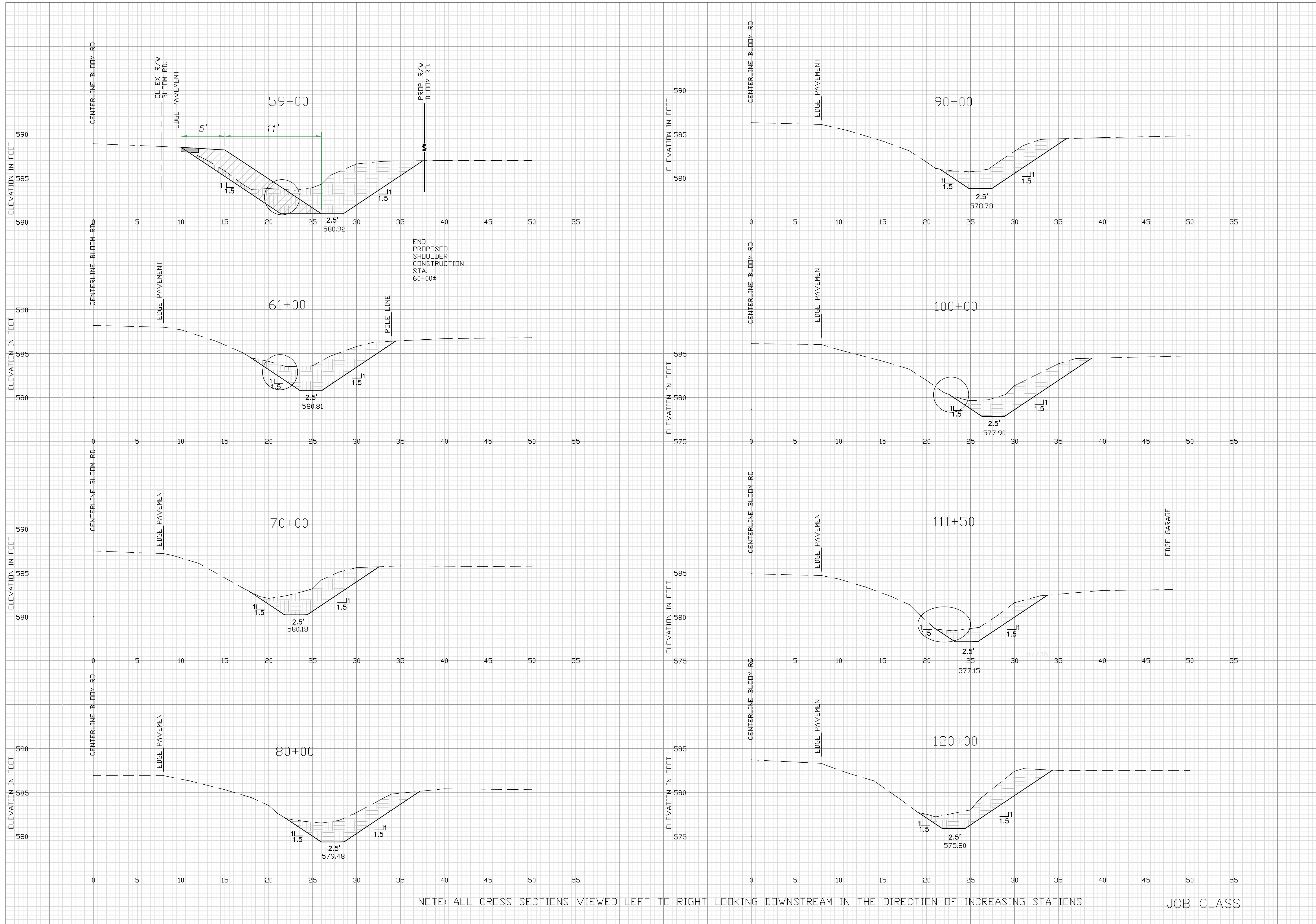
NOTE: ALL CROSS SECTIONS VIEWED LEFT TO RIGHT LOOKING DOWNSTREAM IN THE DIRECTION OF INCREASING STATIONS

DESIGNED	MICHAEL GARGAC	DATE	6/20/17
DRAWN	MICHAEL GARGAC	TITLE	LEISER DITCH
TRACED		CONST. APPROVED	
CHECKED		TITLE	

LEISER DITCH

OTTAWA SOIL & WATER CONSERVATION DISTRICT

CAD FILE I.D.
C:\WORKING\2017\17-06-01-LEISER DITCH\LEISER DITCH.dwg
DRAWING NUMBER
Sheet 4 of 6



DATE		DATE	
Approved	-----	6/20/17	6/20/17
Title	-----	MICHAEL GARGAC	MICHAEL GARGAC
Const. Approved	-----	Traced	Checked
Title	-----		

LEISER DITCH

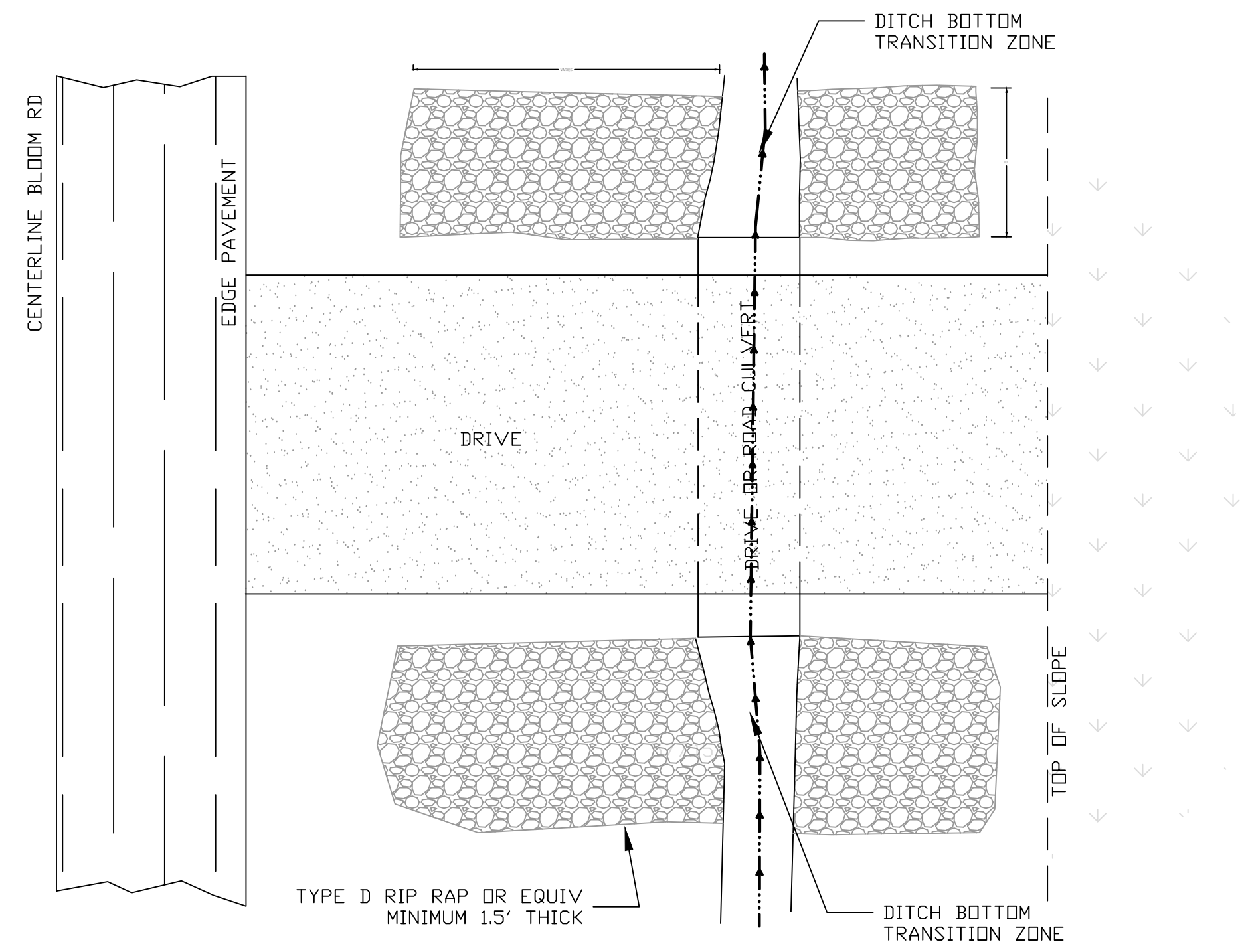
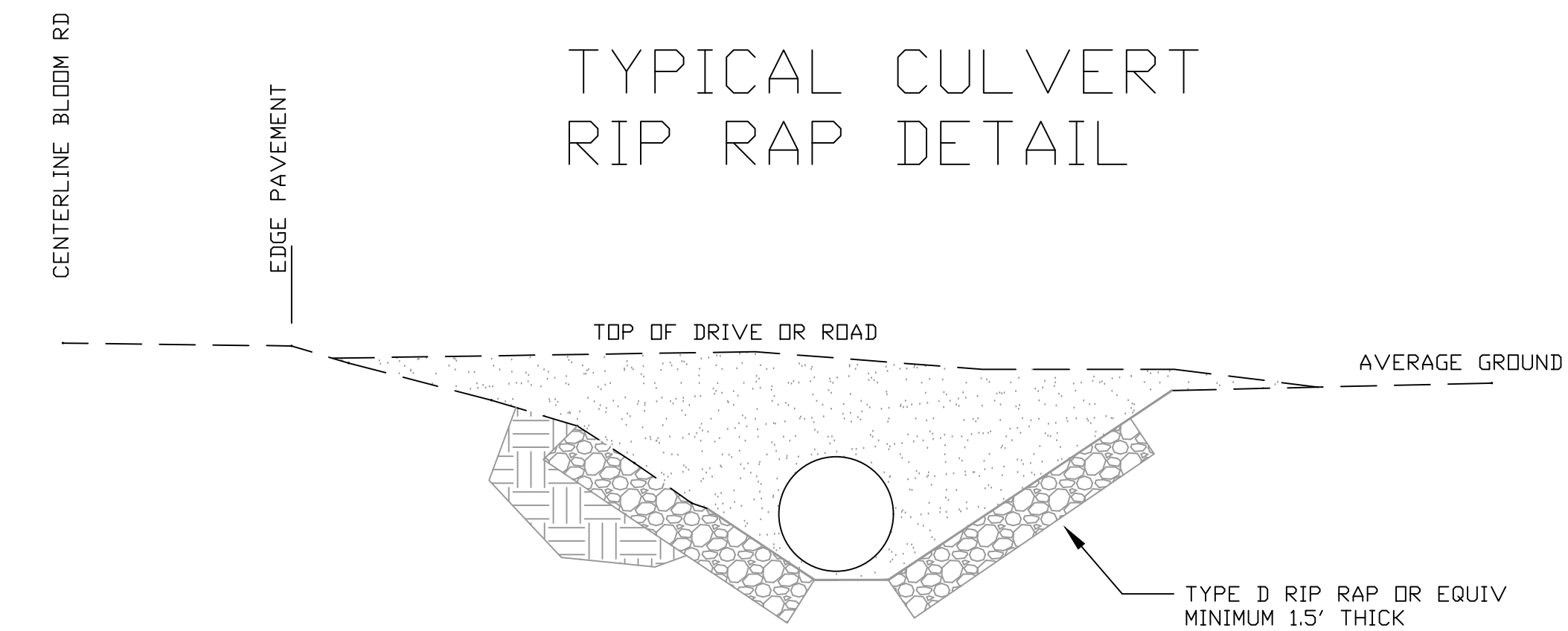
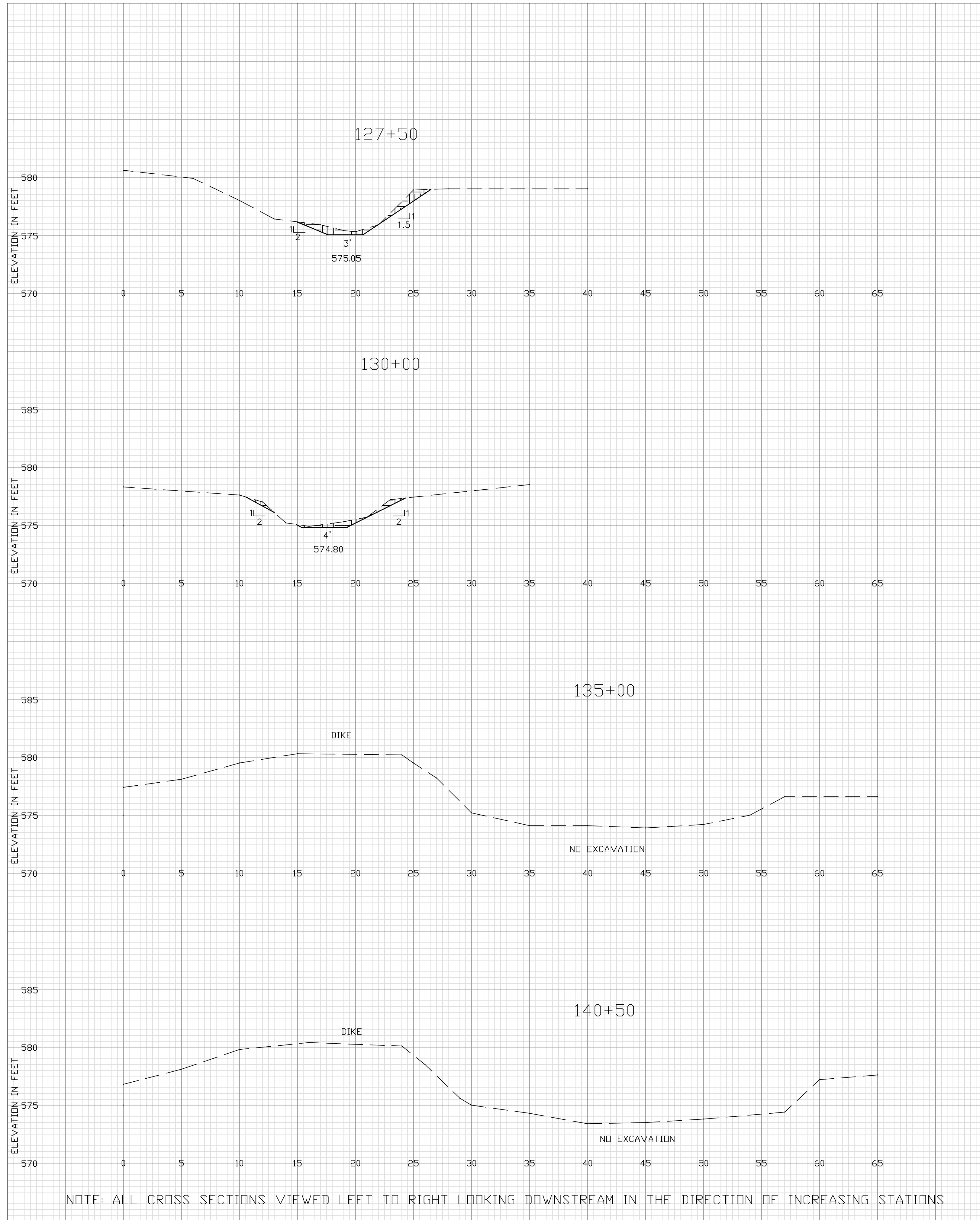
OTTAWA SOIL & WATER CONSERVATION DISTRICT

JOB CLASS

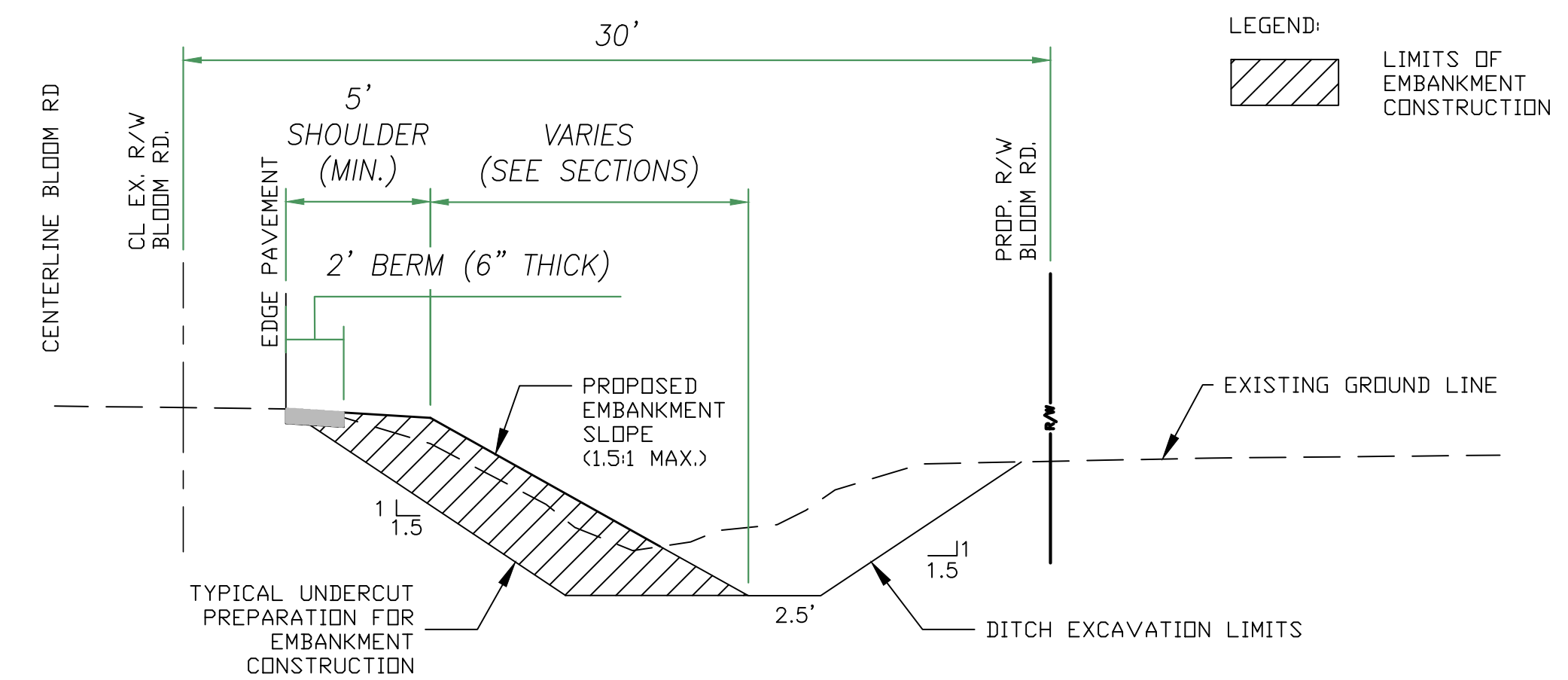
CAD FILE I.D.
2/1/2016 10:40 AM
Leiser_SWD_Cross_Sect.dwg
mgargac

DRAWING NUMBER

Sheet 5 of 6



TYPICAL EMBANKMENT CONSTRUCTION
STA. 32+90 TO STA. 59+96



DATE	Approved	Title	Const. Approved
8/2017	MICHAEL GARGAC	MICHAEL GARGAC	
8/2017	Designed	Drawn	Traced
	Checked		

LEISER DITCH

OTTAWA SOIL & WATER CONSERVATION DISTRICT

CAD FILE I.D.
2/2/2016 12:41 PM
Leiser_SWD_CAD_16.dwg
mrg

DRAWING NUMBER

Sheet 6 of 6